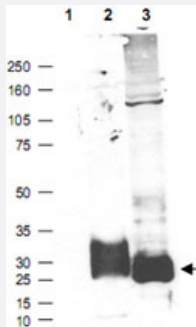


# MFAP5 polyclonal antibody

Catalog # PAB10261      Size 100 ug

## Applications



### Western Blot (Transfected lysate)

Western blot using MFAP5 polyclonal antibody (Cat # PAB10261) shows detection (arrowhead) of secreted MFAP5 (lane 2) and MFAP5 present in a MFAP5 transfected HEK293 lysate (lane 3).

No staining is detected in supernatants from non-transfected cells (lane 1). After SDS-PAGE and transfer the membrane was probed with the primary antibody diluted to 1:100 in TBST with 5% BSA overnight at 4°C. Personal Communication, Micheal Birrer, CCR-NCI, Bethesda, MD.

## Specification

<b>Product Description</b>	Rabbit polyclonal antibody raised against synthetic peptide of MFAP5.
<b>Immunogen</b>	A synthetic peptide corresponding to C-terminus of human MFAP5.
<b>Host</b>	Rabbit
<b>Reactivity</b>	Chimpanzee, Dog, Human, Mouse, Rat
<b>Specificity</b>	This affinity-purified antibody is directed against human MAGP-2 protein
<b>Form</b>	Liquid
<b>Quality Control Testing</b>	Antibody Reactive Against Synthetic Peptide.
<b>Recommend Usage</b>	ELISA (1:5000-1:20000) Western Blot (1:250-1:1000) The optimal working dilution should be determined by the end user.
<b>Storage Buffer</b>	In 20 mM KH <sub>2</sub> PO <sub>4</sub> , 150 mM NaCl, pH 7.2 (0.01% sodium azide)

**Storage Instruction**

Store at 4°C. For long term storage store at -20°C.  
Aliquot to avoid repeated freezing and thawing.

**Note**

This product contains sodium azide: a POISONOUS AND HAZARDOUS SUBSTANCE which should be handled by trained staff only.

## Applications

- Western Blot (Transfected lysate)

Western blot using MFAP5 polyclonal antibody (Cat # PAB10261) shows detection (arrowhead) of secreted MFAP5 (lane 2) and MFAP5 present in a MFAP5 transfected HEK293 lysate (lane 3).

No staining is detected in supernatants from non-transfected cells (lane 1).

After SDS-PAGE and transfer the membrane was probed with the primary antibody diluted to 1:100 in TBST with 5% BSA overnight at 4°C.

Personal Communication, Micheal Birrer, CCR-NCI, Bethesda, MD.

- Enzyme-linked Immunoabsorbent Assay

## Gene Info — MFAP5

**Entrez GeneID** [8076](#)

**Protein Accession#** [Q13361](#)

**Gene Name** MFAP5

**Gene Alias** MAGP2, MP25

**Gene Description** microfibrillar associated protein 5

**Omim ID** [601103](#)

**Gene Ontology** [Hyperlink](#)

**Gene Summary**

This gene encodes a 25-kD microfibril-associated glycoprotein which is rich in serine and threonine residues. It lacks a hydrophobic carboxyl terminus and proline-, glutamine-, and tyrosine-rich regions, which are characteristics of a related 31-kDa microfibril-associated glycoprotein (MFAP2). The close similarity between these two proteins is confined to a central region of 60 aa where precise alignment of 7 cysteine residues occurs. The structural differences suggest that this encoded protein has some functions that are distinct from those of MFAP2. [provided by RefSeq]

**Other Designations** microfibril-associated glycoprotein 2|microfibril-associated glycoprotein-2

## Publication Reference

- [The extracellular matrix protein MAGP-2 interacts with Jagged1 and induces its shedding from the cell surface.](#)

Nehring LC, Miyamoto A, Hein PW, Weinmaster G, Shipley JM.

The Journal of Biological Chemistry 2005 May; 280(21):20349.

Application: IP, Monkey, COS-7 cells

- [The exon structure of the human MAGP-2 gene. Similarity with the MAGP-1 gene is confined to two exons encoding a cysteine-rich region.](#)

Hatzinikolas G, Gibson MA.

The Journal of Biological Chemistry 1998 Nov; 273(45):29309.

- [Further characterization of proteins associated with elastic fiber microfibrils including the molecular cloning of MAGP-2 \(MP25\).](#)

Gibson MA, Hatzinikolas G, Kumaratilake JS, Sandberg LB, Nicholl JK, Sutherland GR, Cleary EG.

The Journal of Biological Chemistry 1996 Jan; 271(2):1096.

Application: IEM, IF, WB-Re, Bovine, Nuchal ligament tissues, Recombinant protein