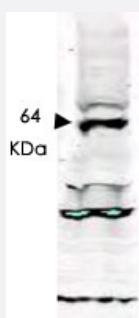


TLK1 polyclonal antibody

Catalog # PAB10238 Size 100 ug

Applications

Western Blot (Cell lysate)



Western blot using TLK1 polyclonal antibody (Cat # PAB10238) shows detection of a band ~ 64 KDa corresponding to isoform 3 of human TLK1 (arrowhead).

Specific reactivity with this band is blocked when the antibody is pre-incubated with the immunizing peptide (data not shown).

Approximately 30 ug of a HeLa nuclear extract was separated by SDS-PAGE and transferred onto nitrocellulose.

After blocking the membrane was probed with the primary antibody diluted to 1 : 250 for 2h at room temperature followed by washes and reaction with a 1 : 10,000 dilution of IRDye™800 conjugated Gt-a-RabbitIgG [H&L] MX for 45 min at room temperature.

Specification

Product Description	Rabbit polyclonal antibody raised against synthetic peptide of TLK1.
Immunogen	A synthetic peptide corresponding to amino acids 737-751 of human TLK1.
Host	Rabbit
Reactivity	Chicken, Chimpanzee, Dog, Human, Mouse, Orangutan, Rat
Specificity	This antibody reacts with both phosphorylated and non-phosphorylated forms of Tlk-1 at the S743 residue (isoform 1) of the protein. This antibody will react with all isoforms of Tlk-1.
Form	Liquid
Quality Control Testing	Antibody Reactive Against Synthetic Peptide.

Recommend Usage	ELISA (1:10000-1:50000) Western Blot (1:200-1:2000) The optimal working dilution should be determined by the end user.
Storage Buffer	In 20 mM KH ₂ PO ₄ , 150 mM NaCl, pH 7.2 (0.01% sodium azide)
Storage Instruction	Store at 4°C. For long term storage store at -20°C. Aliquot to avoid repeated freezing and thawing.
Note	This product contains sodium azide: a POISONOUS AND HAZARDOUS SUBSTANCE which should be handled by trained staff only.

Applications

- Western Blot (Cell lysate)

Western blot using TLK1 polyclonal antibody (Cat # PAB10238) shows detection of a band ~ 64 KDa corresponding to isoform 3 of human TLK1 (arrowhead).

Specific reactivity with this band is blocked when the antibody is pre-incubated with the immunizing peptide (data not shown).

Approximately 30 ug of a HeLa nuclear extract was separated by SDS-PAGE and transferred onto nitrocellulose.

After blocking the membrane was probed with the primary antibody diluted to 1 : 250 for 2h at room temperature followed by washes and reaction with a 1 : 10,000 dilution of IRDye™800 conjugated Gt-a-Rabbit IgG [H&L] MX for 45 min at room temperature.

- Enzyme-linked Immunoabsorbent Assay

Gene Info — TLK1

Entrez GeneID	9874
Protein Accession#	Q9UKI8:NP_036422(isoform1)
Gene Name	TLK1
Gene Alias	KIAA0137, PKU-beta
Gene Description	tousled-like kinase 1
Omim ID	608438
Gene Ontology	Hyperlink
Gene Summary	The Tousled-like kinases, first described in Arabidopsis, are nuclear serine/threonine kinases that are potentially involved in the regulation of chromatin assembly.[supplied by OMIM]
Other Designations	SNARE protein kinase SNAK serine threonine protein kinase

Publication Reference

- [TLK1B is elevated with eIF4E overexpression in breast cancer.](#)

Norton KS, McClusky D, Sen S, Yu H, Meschonat C, Debenedetti A, Li BD.

The Journal of Surgical Research 2004 Jan; 116(1):98.

Application: WB-Ti, Human, Human breast cancer

- [Suppression of Tousled-like kinase activity after DNA damage or replication block requires ATM, NBS1 and Chk1.](#)

Krause DR, Jonnalagadda JC, Gatei MH, Sillje HH, Zhou BB, Nigg EA, Khanna K.

Oncogene 2003 Sep; 22(38):5927.

Application: IP, WB-Tr, Human, AT1ABR, C2ABR, HCT-115, L3 cells

- [Human Tousled like kinases are targeted by an ATM- and Chk1-dependent DNA damage checkpoint.](#)

Groth A, Lukas J, Nigg EA, Sillje HH, Wernstedt C, Bartek J, Hansen K.

The EMBO Journal 2003 Apr; 22(7):1676.

Application: IP, WB-Tr, Human, AT fibroblasts, HCT-15, HeLa, HT-29, U-2 OS cells