

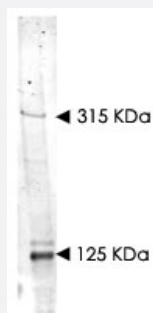
NIPBL polyclonal antibody

Catalog # PAB10226

Size 100 ug

Applications

Western Blot (Tissue lysate)



Western blot using NIPBL polyclonal antibody (Cat # PAB10226) shows detection of bands at ~315 KDa and ~125 KDa corresponding to isoforms of NIPBL (arrow-heads) in mouse heart whole cell tissue extract.

Approximately 35 ug of lysate was separated on a 4-8% gel by SDS-PAGE and transferred onto nitrocellulose.

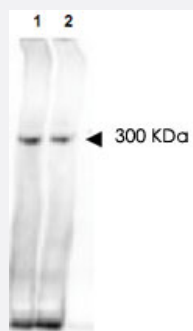
After blocking the membrane was probed with the primary antibody diluted to 1:1,500.

Reaction occurred overnight at 4°C followed by washes and reaction with a 1 : 20,000 dilution of IRDye™800 conjugated Rb-a-Goat IgG [H&L] MXHu for 45 min at room temperature.

IRDye™800 fluorescence image was captured using the Odyssey® Infrared Imaging System developed by LI-COR.

IRDye is a trade mark of LI-COR, Inc.

Western Blot (Tissue lysate)



Western blot using NIPBL polyclonal antibody (Cat # PAB10226) shows detection of a band ~300 KDa corresponding to NIPBL (arrowhead) in human kidney (lane 1) and human heart (Lane 2) whole cell tissue extracts.

Approximately 20 ug of each lysate was separated by SDS-PAGE and transferred onto nitrocellulose.

After blocking the membrane was probed with the primary antibody diluted to 1:500.

Use HRP conjugated Rb-a-Goat IgG [H&L] MXHu for detection.

Specification

Product Description

Goat polyclonal antibody raised against synthetic peptide of NIPBL.

Immunogen	A synthetic peptide corresponding to amino acids 344-356 of human NIPBL.
Host	Goat
Reactivity	Bovine, Dog, Human, Mouse, Orangutan, Rat
Specificity	This affinity purified antibody is directed against human IDN3 protein.
Form	Liquid
Quality Control Testing	Antibody Reactive Against Synthetic Peptide.
Recommend Usage	ELISA (1:2000-1:10000) Western Blot (1:500-1:3000) The optimal working dilution should be determined by the end user.
Storage Buffer	In 20 mM KH ₂ PO ₄ , 150 mM NaCl, pH 7.2 (0.01% sodium azide)
Storage Instruction	Store at 4°C. For long term storage store at -20°C. Aliquot to avoid repeated freezing and thawing.
Note	This product contains sodium azide: a POISONOUS AND HAZARDOUS SUBSTANCE which should be handled by trained staff only.

Applications

- Western Blot (Tissue lysate)

Western blot using NIPBL polyclonal antibody (Cat # PAB10226) shows detection of bands at ~315 KDa and ~125 KDa corresponding to isoforms of NIPBL (arrow-heads) in mouse heart whole cell tissue extract. Approximately 35 ug of lysate was separated on a 4-8% gel by SDS-PAGE and transferred onto nitrocellulose. After blocking the membrane was probed with the primary antibody diluted to 1:1,500. Reaction occurred overnight at 4°C followed by washes and reaction with a 1 : 20,000 dilution of IRDye™800 conjugated Rb-a-Goat IgG [H&L] MXHu for 45 min at room temperature. IRDye™800 fluorescence image was captured using the Odyssey® Infrared Imaging System developed by LI-COR. IRDye is a trade mark of LI-COR, Inc.

- Western Blot (Tissue lysate)

Western blot using NIPBL polyclonal antibody (Cat # PAB10226) shows detection of a band ~300 KDa corresponding to NIPBL (arrowhead) in human kidney (lane 1) and human heart (Lane 2) whole cell tissue extracts. Approximately 20 ug of each lysate was separated by SDS-PAGE and transferred onto nitrocellulose. After blocking the membrane was probed with the primary antibody diluted to 1:500. Use HRP conjugated Rb-a-Goat IgG [H&L] MXHu for detection.

- Enzyme-linked Immunoabsorbent Assay

Gene Info — NIPBL

Entrez GeneID	25836
Protein Accession#	Q6KC79:BAA77335
Gene Name	NIPBL
Gene Alias	CDLS, CDLS1, DKFZp434L1319, FLJ11203, FLJ12597, FLJ13354, FLJ13648, FLJ44854, IDN3, IDN3-B
Gene Description	Nipped-B homolog (Drosophila)
Omim ID	122470 608667
Gene Ontology	Hyperlink
Gene Summary	<p>This gene encodes the homolog of the Drosophila melanogaster Nipped-B gene product and fungal Scc2-type sister chromatid cohesion proteins. The Drosophila protein facilitates enhancer-promoter communication of remote enhancers and plays a role in developmental regulation. It is also homologous to a family of chromosomal adherins with broad roles in sister chromatid cohesion, chromosome condensation, and DNA repair. The human protein has a bipartite nuclear targeting sequence and a putative HEAT repeat. Condensins, cohesins and other complexes with chromosome-related functions also contain HEAT repeats. Mutations in this gene result in Cornelia de Lange syndrome, a disorder characterized by dysmorphic facial features, growth delay, limb reduction defects, and mental retardation. Two transcript variants encoding different isoforms have been found for this gene. [provided by RefSeq]</p>
Other Designations	OTTHUMP00000116005 SCC2 homolog delangin nipped-B-like

Publication Reference

- [NIPBL gene responsible for Cornelia de Lange syndrome, a severe developmental disorder.](#)
Ben-Asher E, Lancet D.
The Israel Medical Association Journal 2004 Sep; 6(9):571.
- [NIPBL mutational analysis in 120 individuals with Cornelia de Lange syndrome and evaluation of genotype-phenotype correlations.](#)
Gillis LA, McCallum J, Kaur M, DeScipio C, Yaeger D, Mariani A, Kline AD, Li HH, Devoto M, Jackson LG, Krantz ID.
American Journal of Human Genetics 2004 Oct; 75(4):610.

- [NIPBL, encoding a homolog of fungal Scc2-type sister chromatid cohesion proteins and fly Nipped-B, is mutated in Cornelia de Lange syndrome.](#)

Tonkin ET, Wang TJ, Lisgo S, Bamshad MJ, Strachan T.

Nature Genetics 2004 Jun; 36(6):636.

Disease

- [Cleft Lip](#)
- [Cleft Palate](#)
- [De Lange Syndrome](#)