

ATAD5 polyclonal antibody

Catalog # PAB10222 Size 100 ug

Applications

Western Blot (Cell lysate)

Western blot using ATAD5 polyclonal antibody (Cat # PAB10222) shows detection of a band ~120 KDa corresponding to human ATAD5 (arrowhead) in various cell lysates.

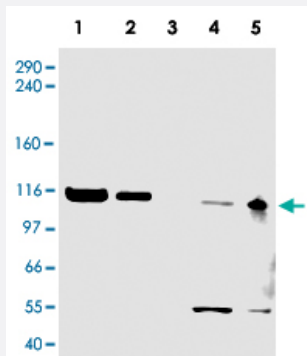
Lanes contain ~ 5 ug of HeLa nuclear extract (1), HeLa (2), A-431 (3), Jurkat (4) and HEK293 (5) whole cell lysates.

After SDS-PAGE, transfer and blocking, the membrane was probed with the primary antibody diluted to 1:500.

The membrane was then washed and reacted with a HRP conjugated Gt-a-Rabbit IgG [H&L] MX followed by ECL detection using a 2m exposure time. The expected molecular weight of ATAD5 is 120 KDa according to Kanellis P et al. 2003, although the predicted molecular weight is 207 KDa.

The 50 KDa bands in Jurkat and 293 cell lysates are probably cross-reaction with other proteins.

Both the 120 KDa and 50 KDa bands are not observed when antibody is pre-incubated with peptide (datanot shown).



Specification

Product Description	Rabbit polyclonal antibody raised against synthetic peptide of ATAD5.
Immunogen	A synthetic peptide corresponding to amino acids 63-76 of human ATAD5.
Host	Rabbit
Reactivity	Chimpanzee, Dog, Human
Specificity	The following proteins should be considered to be highly homologous to Elg1 when using this antibody: human chromosome fragility associated gene 1 (NP_079133), hypothetical dog protein FLJ12735 (XP_548276), hypothetical chimpanzee protein FLJ12735 (XP_511388), and a hypothetical human protein of 1224 residues (CAH10412). All show 100% homology to the immunogen.

Form	Liquid
Quality Control Testing	Antibody Reactive Against Synthetic Peptide.
Recommend Usage	ELISA (1:3000-1:15000) Western Blot (1:500-1:2000) The optimal working dilution should be determined by the end user.
Storage Buffer	In 20 mM KH ₂ PO ₄ , 150 mM NaCl, pH 7.2 (0.01% sodium azide)
Storage Instruction	Store at 4°C. For long term storage store at -20°C. Aliquot to avoid repeated freezing and thawing.
Note	This product contains sodium azide: a POISONOUS AND HAZARDOUS SUBSTANCE which should be handled by trained staff only.

Applications

- Western Blot (Cell lysate)

Western blot using ATAD5 polyclonal antibody (Cat # PAB10222) shows detection of a band ~120 KDa corresponding to human ATAD5 (arrowhead) in various cell lysates.

Lanes contain ~ 5 ug of HeLa nuclear extract (1), HeLa (2), A-431 (3), Jurkat (4) and HEK293 (5) whole cell lysates.

After SDS-PAGE, transfer and blocking, the membrane was probed with the primary antibody diluted to 1:500.

The membrane was then washed and reacted with a HRP conjugated Gt-a-Rabbit IgG [H&L] MX followed by ECL detection using a 2m exposure time.

The expected molecular weight of ATAD5 is 120 KDa according to Kanellis P et al. 2003, although the predicted molecular weight is 207 KDa.

The 50 KDa bands in Jurkat and 293 cell lysates are probably cross-reaction with other proteins.

Both the 120 KDa and 50 KDa bands are not observed when antibody is pre-incubated with peptide (data not shown).

- Enzyme-linked Immunoabsorbent Assay

Gene Info — ATAD5

Entrez GeneID	79915
Protein Accession#	Q96QE3;CAC44537
Gene Name	ATAD5
Gene Alias	C17orf41, FLJ12735, FRAG1
Gene Description	ATPase family, AAA domain containing 5
Omim ID	609534

Gene Ontology	Hyperlink
Gene Summary	O
Other Designations	chromosome fragility associated gene 1

Publication Reference

- [Elg1 forms an alternative PCNA-interacting RFC complex required to maintain genome stability.](#)

Kanellis P, Agyei R, Durocher D.

Current Biology 2003 Sep; 13(18):1583.

- [A common set of at least 11 functional genes is lost in the majority of NF1 patients with gross deletions.](#)

Jenne DE, Tinschert S, Stegmann E, Reimann H, Nurnberg P, Horn D, Naumann I, Buske A, Thiel G.

Genomics 2000 May; 66(1):93.

Disease

- [Craniofacial Abnormalities](#)
- [Diabetes Mellitus](#)
- [Growth Disorders](#)
- [Learning Disorders](#)
- [Syndrome](#)
- [Tobacco Use Disorder](#)