

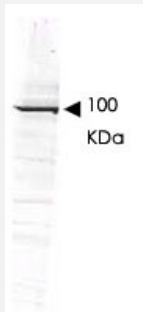
GGA1 polyclonal antibody

Catalog # PAB10213

Size 100 ug

Applications

Western Blot (Cell lysate)



Western blot using GGA1 polyclonal antibody (Cat # PAB10213) shows detection of bands at ~100 KDa corresponding to YFP-GGA1 fusion present in a lysate of HEK293 cells over-expressing the recombinant protein (arrowhead).

Approximately 35 ug of lysate was separated on a 4-20% gel by SDS-PAGE and transferred onto nitrocellulose.

After blocking the membrane was probed with the primary antibody diluted to 1:1,350.

Reaction occurred overnight at 4°C followed by washes and reaction with a 1 : 10,000 dilution of IRDye™800 conjugated Rb-a-Goat IgG [H&L] MXHu for 45 min at room temperature.

Specification

Product Description	Rabbit polyclonal antibody raised against synthetic peptide of GGA1.
Immunogen	A synthetic peptide corresponding to amino acids 336-352 of human GGA1.
Host	Rabbit
Reactivity	Bovine, Human, Mouse, Rat
Specificity	The immunizing sequence is present only in isoform 1 of this protein, therefore cross reactivity with splice variants is not expected.
Form	Liquid
Quality Control Testing	Antibody Reactive Against Synthetic Peptide.

Recommend Usage	ELISA (1:10000-1:50000) Western Blot (1:500-1:3000) The optimal working dilution should be determined by the end user.
Storage Buffer	In 20 mM KH ₂ PO ₄ , 150 mM NaCl, pH 7.2 (0.01% sodium azide)
Storage Instruction	Store at 4°C. For long term storage store at -20°C. Aliquot to avoid repeated freezing and thawing.
Note	This product contains sodium azide: a POISONOUS AND HAZARDOUS SUBSTANCE which should be handled by trained staff only.

Applications

- Western Blot (Cell lysate)

Western blot using GGA1 polyclonal antibody (Cat # PAB10213) shows detection of bands at ~100 KDa corresponding to YFP-GGA1 fusion present in a lysate of HEK293 cells over-expressing the recombinant protein (arrowhead).

Approximately 35 ug of lysate was separated on a 4-20% gel by SDS-PAGE and transferred onto nitrocellulose.

After blocking the membrane was probed with the primary antibody diluted to 1:1,350.

Reaction occurred overnight at 4°C followed by washes and reaction with a 1 : 10,000 dilution of IRDye™800 conjugated Rb-a-Goat IgG [H&L] MXHu for 45 min at room temperature.

- Immunoprecipitation

- Enzyme-linked Immunoabsorbent Assay

Gene Info — GGA1

Entrez GeneID	26088
Protein Accession#	Q9UJY5;NP_037497
Gene Name	GGA1
Gene Alias	-
Gene Description	golgi associated, gamma adaptin ear containing, ARF binding protein 1
Omim ID	606004
Gene Ontology	Hyperlink

Gene Summary

This gene encodes a member of the Golgi-localized, gamma adaptin ear-containing, ARF-binding (GGA) protein family. Members of this family are ubiquitous coat proteins that regulate the trafficking of proteins between the trans-Golgi network and the lysosome. These proteins share an amino-terminal VHS domain which mediates sorting of the mannose 6-phosphate receptors at the trans-Golgi network. They also contain a carboxy-terminal region with homology to the ear domain of gamma-adaptins. Multiple alternatively spliced transcript variants encoding different isoforms have been found for this gene. [provided by RefSeq]

Other Designations

ADP-ribosylation factor binding protein 1|OTTHUMP00000028975|OTTHUMP00000042200|gamma-adaptin related protein 1

Publication Reference

- [The trihelical bundle subdomain of the GGA proteins interacts with multiple partners through overlapping but distinct sites.](#)

Mattera R, Puertollano R, Smith WJ, Bonifacino JS.

The Journal of Biological Chemistry 2004 Jul; 279(30):31409.

Application: WB, Bovine, Bovine brains

- [GGA1 interacts with the adaptor protein AP-1 through a WNSF sequence in its hinge region.](#)

Bai H, Doray B, Kornfeld S.

The Journal of Biological Chemistry 2004 Apr; 279(17):17411.

- [The interaction of the human GGA1 GAT domain with rabaptin-5 is mediated by residues on its three-helix bundle.](#)

Zhai P, He X, Liu J, Wakeham N, Zhu G, Li G, Tang J, Zhang XC.

Biochemistry 2003 Dec; 42(47):13901.

Pathway

- [Lysosome](#)