

FBXO43 polyclonal antibody

Catalog # PAB10206 Size 100 ug

Applications

Western Blot (Transfected lysate)

Western blot using FBXO43 polyclonal antibody (Cat # PAB10206).

Panels A and B show two identical membranes containing marker, in vitro translated FBXO43 (FBXO43 ivt), and a whole cell extract from 293T cells loaded in duplicate.

Panel A shows antibody reactivity.

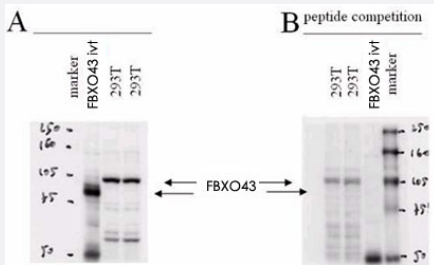
Panel B shows antibody reactivity after first pre-incubating the antibody with the immunizing peptide.

This pre-incubation greatly diminishes specific band recognition.

Peptide inhibition completely removes the in vitro translated band and greatly reduces the endogenous band from 293T cells.

When this experiment was repeated using a mock in vitro translation, no band was detected (data not shown).

Personal Communication, Daniele Guardavaccaro, NYU Cancer Institute.



Specification

Product Description Rabbit polyclonal antibody raised against synthetic peptide of FBXO43.

Immunogen A synthetic peptide corresponding to N-terminus 60 amino acids of human FBXO43.

Host Rabbit

Reactivity Chimpanzee, Human

Specificity This affinity-purified antibody is directed against human Fbp5B protein.

Form Liquid

Quality Control Testing Antibody Reactive Against Synthetic Peptide.

Recommend Usage	ELISA (1:10000-1:50000) Western Blot (1:500-1:3000) The optimal working dilution should be determined by the end user.
Storage Buffer	In 20 mM KH ₂ PO ₄ , 150 mM NaCl, pH 7.2 (0.01% sodium azide)
Storage Instruction	Store at 4°C. For long term storage store at -20°C. Aliquot to avoid repeated freezing and thawing.
Note	This product contains sodium azide: a POISONOUS AND HAZARDOUS SUBSTANCE which should be handled by trained staff only.

Applications

- Western Blot (Transfected lysate)

Western blot using FBXO43 polyclonal antibody (Cat # PAB10206).

Panels A and B show two identical membranes containing marker, in vitro translated FBXO43 (FBXO43 ivt), and a whole cell extract from 293T cells loaded in duplicate.

Panel A shows antibody reactivity.

Panel B shows antibody reactivity after first pre-incubating the antibody with the immunizing peptide.

This pre-incubation greatly diminishes specific band recognition.

Peptide inhibition completely removes the in vitro translated band and greatly reduces the endogenous band from 293T cells.

When this experiment was repeated using a mock in vitro translation, no band was detected (data not shown).

Personal Communication, Daniele Guardavaccaro, NYU Cancer Institute.

- Immunoprecipitation

- Enzyme-linked Immunoabsorbent Assay

Gene Info — FBXO43

Entrez GeneID	286151
Protein Accession#	NP_001025031:Q4G163
Gene Name	FBXO43
Gene Alias	EMI2, ERP1, Fbx43
Gene Description	F-box protein 43
Omim ID	609110
Gene Ontology	Hyperlink

Gene Summary

Members of the F-box protein family, such as FBXO43, are characterized by an approximately 40 -amino acid F-box motif. SCF complexes, formed by SKP1 (MIM 601434), cullin (see CUL1; MIM 603134), and F-box proteins, act as protein-ubiquitin ligases. F-box proteins interact with SKP1 through the F box, and they interact with ubiquitination targets through other protein interaction domains (Jin et al., 2004 [PubMed 15520277]).[supplied by OMIM]

Other Designations

early mitotic inhibitor 2

Publication Reference

- [Systematic analysis and nomenclature of mammalian F-box proteins.](#)

Jin J, Cardozo T, Lovering RC, Elledge SJ, Pagano M, Harper JW.

Genes & Development 2004 Nov; 18(21):2573.