

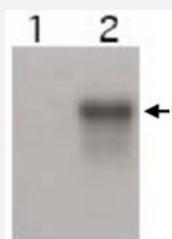
# Ccne2 polyclonal antibody

Catalog # PAB10197

Size 100 ug

## Applications

### Western Blot (Transfected lysate)



Western blot using Ccne2 polyclonal antibody (Cat # PAB10197) shows specific detection of Ccne2.

Cell extracts over-expressing mouse Ccne1 (Lane 1) and Ccne2 (Lane 2) were electrophoresed, transferred to nitrocellulose, and probed with the Ccne2 polyclonal antibody.

The affinity purified antibody also detects endogenous Ccne2 in Skp2 <sup>-/-</sup> MEF cells. (data not shown).

Personal Communication, Allan Weissman, CCR-NCI, Bethesda, MD.

## Specification

<b>Product Description</b>	Rabbit polyclonal antibody raised against synthetic peptide of Ccne2.
<b>Immunogen</b>	A synthetic peptide corresponding to C-terminus of mouse Ccne2.
<b>Host</b>	Rabbit
<b>Reactivity</b>	Human, Mouse, Rat
<b>Specificity</b>	This affinity purified antibody is directed against mouse Cyclin E2 protein.
<b>Form</b>	Liquid
<b>Quality Control Testing</b>	Antibody Reactive Against Synthetic Peptide.
<b>Recommend Usage</b>	ELISA (1:20000-1:85000) Western Blot (1:200-1:2000) The optimal working dilution should be determined by the end user.
<b>Storage Buffer</b>	In 20 mM KH <sub>2</sub> PO <sub>4</sub> , 150 mM NaCl, pH 7.2 (0.01% sodium azide)

**Storage Instruction**

Store at 4°C. For long term storage store at -20°C.  
Aliquot to avoid repeated freezing and thawing.

**Note**

This product contains sodium azide: a POISONOUS AND HAZARDOUS SUBSTANCE which should be handled by trained staff only.

## Applications

- Western Blot (Transfected lysate)

Western blot using Ccne2 polyclonal antibody (Cat # PAB10197) shows specific detection of Ccne2.

Cell extracts over-expressing mouse Ccne1 (Lane 1) and Ccne2 (Lane 2) were electrophoresed, transferred to nitrocellulose, and probed with the Ccne2 polyclonal antibody.

The affinity purified antibody also detects endogenous Ccne2 in Skp2 <sup>-/-</sup> MEF cells. (data not shown).

Personal Communication, Allan Weissman, CCR-NCI, Bethesda, MD.

- Immunoprecipitation

- Enzyme-linked Immunoabsorbent Assay

## Gene Info — Ccne2

**Entrez GeneID**[12448](#)**Protein Accession#**[AAC80527;Q9Z238](#)**Gene Name**

Ccne2

**Gene Alias**

-

**Gene Description**

cyclin E2

**Gene Ontology**[Hyperlink](#)**Other Designations**

OTTMUSP00000004878|OTTMUSP00000004879

## Publication Reference

- [Cell-Cycle Proteins Control Production of Neutrophil Extracellular Traps.](#)

Amulic B, Knackstedt SL, Abu Abed U, Deigendesch N, Harbort CJ, Caffrey BE, Brinkmann V, Heppner FL, Hinds PW, Zychlinsky A.

Developmental Cell 2017 Nov; 43(4):449.

Application: WB-Ce, Human , Human Peripheral Blood Neutrophils

- [Cdc2-cyclin E complexes regulate the G1/S phase transition.](#)

Aleem E, Kiyokawa H, Kaldis P.

Nature Cell Biology 2005 Aug; 7(8):831.

- [Mammalian cell cycles without cyclin E-CDK2.](#)

Yu Q, Sicinski P.

Cell Cycle 2004 Mar; 3(3):292.

Application: WB, Human, Human mammalian cells

- [Cyclins E1 and E2 are required for endoreplication in placental trophoblast giant cells.](#)

Parisi T, Beck AR, Rougier N, McNeil T, Lucian L, Werb Z, Amati B.

The EMBO Journal 2003 Sep; 22(18):4794.