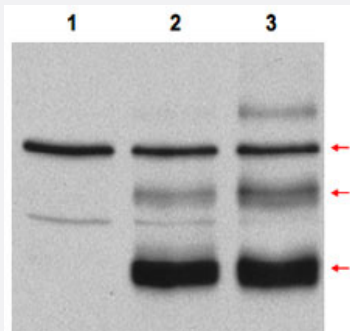


Myb polyclonal antibody

Catalog # PAB10189 Size 100 ug

Applications

Western Blot (Transfected lysate)



Western blot using Myb polyclonal antibody (Cat # PAB10189) in COS-7 cell lysates.

Lane 1 : vector; Lane 2 : transfected with Myb, no treatment; Lane 3 :

transfected with Myb and heat stress-treated (incubation at 42°C for 30 minutes) to induce Myb modification.

Lane 3 shows detection of bands at 75, 98, and 125 KDa corresponding to overexpressed Myb (arrows) : wild-type, with one attached SUMO molecule, and with two attached SUMO molecules, respectively.

Nitrocellulose 0.45 um membrane was blocked for 1 hr at RT in 10% BLOTTO in PBS.

The primary antibody was used at 1:500.

Personal communication, J. Bies, NCI NIH, Bethesda.

Specification

Product Description	Rabbit polyclonal antibody raised against synthetic peptide of Myb.
Immunogen	A synthetic peptide corresponding to internal region of mouse Myb.
Host	Rabbit
Reactivity	Chimpanzee, Gorilla, Horse, Human, Monkey, Mouse, Opossum, Orangutan, Pig, Rat
Form	Liquid
Quality Control Testing	Antibody Reactive Against Synthetic Peptide.
Recommend Usage	ELISA (1:10000-1:25000) Western Blot (1:250-1:1000) The optimal working dilution should be determined by the end user.

Storage Buffer	In 20 mM KH ₂ PO ₄ , 150 mM NaCl, pH 7.2 (0.01% sodium azide)
Storage Instruction	Store at 4°C. For long term storage store at -20°C. Aliquot to avoid repeated freezing and thawing.
Note	This product contains sodium azide: a POISONOUS AND HAZARDOUS SUBSTANCE which should be handled by trained staff only.

Applications

- Western Blot (Transfected lysate)

Western blot using Myb polyclonal antibody (Cat # PAB10189) in COS-7 cell lysates.

Lane 1 : vector; Lane 2 : transfected with Myb, no treatment; Lane 3 : transfected with Myb and heat stress-treated (incubation at 42°C for 30 minutes) to induce Myb modification.

Lane 3 shows detection of bands at 75, 98, and 125 KDa corresponding to overexpressed Myb (arrows) : wild-type, with one attached SUMO molecule, and with two attached SUMO molecules, respectively.

Nitrocellulose 0.45 um membrane was blocked for 1 hr at RT in 10% BLOTTO in PBS.

The primary antibody was used at 1:500.

Personal communication, J. Bies, NCI NIH, Bethesda.

- Enzyme-linked Immunoabsorbent Assay

Gene Info — Myb

Entrez GeneID	17863
Protein Accession#	NP_034978:P06876
Gene Name	Myb
Gene Alias	AI550390, M16449, MGC18531, c-myb
Gene Description	myeloblastosis oncogene
Gene Ontology	Hyperlink
Other Designations	gag-myb protein myeloblastosis proto-oncogene product tumor-specific myb protein

Publication Reference

- [Stress-induced inactivation of the c-Myb transcription factor through conjugation of SUMO-2/3 proteins.](#)

Sramko M, Markus J, Kabat J, Wolff L, Bies J.

The Journal of Biological Chemistry 2006 Dec; 281(52):40065.

Application: IP, WB-Tr, Monkey, COS-7 cells

- [Covalent attachment of the SUMO-1 protein to the negative regulatory domain of the c-Myb transcription factor modifies its stability and transactivation capacity.](#)

Bies J, Markus J, Wolff L.

The Journal of Biological Chemistry 2002 Mar; 277(11):8999.

Application: IP, WB-Tr, Monkey, COS-7 cells