

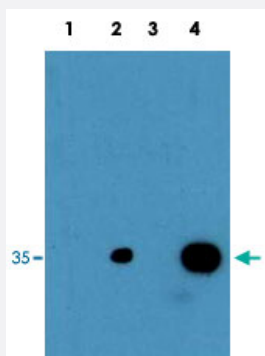
# Cebpd polyclonal antibody

Catalog # PAB10182

Size 100 ug

## Applications

### Western Blot (Cell lysate)



Western blot using Cebpd polyclonal antibody (Cat # PAB10182) shows detection of endogenous protein in whole cell extracts from mouse primary macrophage cells.

The blot shows staining as follows : untreated wild-type (WT) cells (lane 1), WT cells treated 3 h with LPS (lane 2) and Cebpd knock-out cells treated 3H with LPS (lane 3).

The band at ~35 kDa, indicated by the arrowhead, corresponds to endogenous Cebpd.

Primary antibody was used at 1 : 15,000.

ECL was used for detection.

Personal communication, E.Sterneck, NCI, Frederick, MD.

## Specification

<b>Product Description</b>	Rabbit polyclonal antibody raised against partial recombinant Cebpd.
<b>Immunogen</b>	Recombinant protein corresponding to N-terminus of mouse Cebpd.
<b>Host</b>	Rabbit
<b>Reactivity</b>	Human, Mouse
<b>Specificity</b>	No cross-reactivity is observed with mouse C/EBPalpha or C/EBPbeta.
<b>Form</b>	Liquid
<b>Quality Control Testing</b>	Antibody Reactive Against Recombinant Protein.

<b>Recommend Usage</b>	ELISA (1:4000-1:9000) Western Blot (1:1000-1:15000) Immunoprecipitation (0.8-1.5 ug/mL) The optimal working dilution should be determined by the end user.
<b>Storage Buffer</b>	In 20 mM KH <sub>2</sub> PO <sub>4</sub> , 150 mM NaCl, pH 7.2 (0.01% sodium azide)
<b>Storage Instruction</b>	Store at 4°C. For long term storage store at -20°C. Aliquot to avoid repeated freezing and thawing.
<b>Note</b>	This product contains sodium azide: a POISONOUS AND HAZARDOUS SUBSTANCE which should be handled by trained staff only.

## Applications

- Western Blot (Cell lysate)

Western blot using Cebpd polyclonal antibody (Cat # PAB10182) shows detection of endogenous protein in whole cell extracts from mouse primary macrophage cells.

The blot shows staining as follows : untreated wild-type (WT) cells (lane 1), WT cells treated 3 h with LPS (lane 2) and Cebpd knock-out cells treated 3H with LPS (lane 3).

The band at ~35 kDa, indicated by the arrowhead, corresponds to endogenous Cebpd.

Primary antibody was used at 1 : 15,000.

ECL was used for detection.

Personal communication, E.Sterneck, NCI, Frederick, MD.

- Immunoprecipitation

- Enzyme-linked Immunoabsorbent Assay

## Gene Info — Cebpd

<b>Entrez GeneID</b>	<a href="#">12609</a>
<b>Protein Accession#</b>	<a href="#">NP_031705:Q00322</a>
<b>Gene Name</b>	Cebpd
<b>Gene Alias</b>	-
<b>Gene Description</b>	CCAAT/enhancer binding protein (C/EBP), delta
<b>Gene Ontology</b>	<a href="#">Hyperlink</a>
<b>Gene Summary</b>	O

## Other Designations

CCAAT/enhancer binding protein delta

## Publication Reference

- [Proteasome-mediated CCAAT/enhancer-binding protein delta \(C/EBPdelta\) degradation is ubiquitin-independent.](#)

Zhou S, Dewille JW.

The Biochemical Journal 2007 Jul; 405(2):341.

- [c/ebpdelta Null mouse as a model for the double knock-out of slc5a8 and slc5a12 in kidney.](#)

Thangaraju M, Ananth S, Martin PM, Roon P, Smith SB, Sterneck E, Prasad PD, Ganapathy V.

The Journal of Biological Chemistry 2006 Sep; 281(37):26769.

Application: IF, Mouse, Mouse kidney

- [CCAAT/enhancer-binding protein delta activates the Runx2-mediated transcription of mouse osteocalcin II promoter.](#)

Shin CS, Jeon MJ, Yang JY, Her SJ, Kim D, Kim SW, Kim SY.

Journal of Molecular Endocrinology 2006 Jun; 36(3):531.

Application: IP, WB-Ce, Mouse, Mouse 3T3-L1, C3H10T1/2, calvarial cells, MC3T3-E1, ROS, ST2 cells