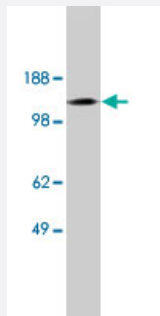


# SLC9A6 polyclonal antibody

Catalog # PAB10139      Size 100 ug

## Applications



### Western Blot (Tissue lysate)

Western blot using SLC9A6 polyclonal antibody (Cat # PAB10139) on human brain lysate (15 ug/lane). Antibody used at 10 ug/mL .

## Specification

|                                |  |
|--------------------------------|--|
| <b>Product Description</b>     | Rabbit polyclonal antibody raised against synthetic peptide of SLC9A6.   |
| <b>Immunogen</b>               | A synthetic peptide corresponding to human SLC9A6.   |
| <b>Host</b>                    | Rabbit   |
| <b>Reactivity</b>              | Human  |
| <b>Form</b>                    | Liquid   |
| <b>Quality Control Testing</b> | Antibody Reactive Against Synthetic Peptide.   |
| <b>Recommend Usage</b>         | Western blot (1 to 5 ug/mL)<br>The optimal working dilution should be determined by the end user.                      |
| <b>Storage Buffer</b>          | In PBS (0.08% sodium azide)  |
| <b>Storage Instruction</b>     | Store at -20°C.<br>Aliquot to avoid repeated freezing and thawing.   |
| <b>Note</b>                    | This product contains sodium azide: a POISONOUS AND HAZARDOUS SUBSTANCE which should be handled by trained staff only. |

## Applications

- Western Blot (Tissue lysate)

Western blot using SLC9A6 polyclonal antibody (Cat # PAB10139) on human brain lysate (15 ug/lane). Antibody used at 10 ug/mL .

- Western Blot

## Gene Info — SLC9A6

Entrez GeneID [10479](#)

Gene Name SLC9A6

Gene Alias KIAA0267, MRSA, NHE6

Gene Description solute carrier family 9 (sodium/hydrogen exchanger), member 6

Omim ID [300231](#)

Gene Ontology [Hyperlink](#)

**Gene Summary** The SLC9A6 gene encodes a monovalent sodium-selective sodium/hydrogen exchanger (NHE) that is found in the membranes of intracellular organelles such as mitochondria and endosomes. NHEs participate in a wide array of essential cellular processes, including control of intracellular pH, maintenance of cellular volume, and reabsorption of sodium across renal, intestinal, and other epithelia.[supplied by OMIM]

**Other Designations** OTTHUMP00000024089|OTTHUMP00000024090

## Publication Reference

- [Identification of a mitochondrial Na<sup>+</sup>/H<sup>+</sup> exchanger.](#)

Numata M, Petrecca K, Lake N, Orlowski J.

The Journal of Biological Chemistry 1998 Mar; 273(12):6951.

## Pathway

- [Cardiac muscle contraction](#)

## Disease

- [Angelman Syndrome](#)