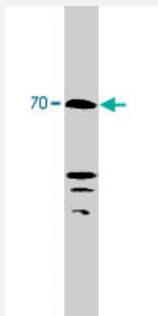


Kcnd2 polyclonal antibody

Catalog # PAB10107

Size 100 ug

Applications



Western Blot (Tissue lysate)

Western blot analysis using Kcnd2 polyclonal antibody (Cat # PAB10107) on rat brain lysate.

Specification

Product Description	Rabbit polyclonal antibody raised against synthetic peptide of Kcnd2.
Immunogen	A synthetic peptide (conjugated with KLH) corresponding to rat Kcnd2.
Host	Rabbit
Reactivity	Human, Mouse, Rat
Form	Liquid
Quality Control Testing	Antibody Reactive Against Synthetic Peptide.
Recommend Usage	Western blot (5 to 10 ug/mL) The optimal working dilution should be determined by the end user.
Storage Buffer	In PBS (0.08% sodium azide)
Storage Instruction	Store at -20°C. Aliquot to avoid repeated freezing and thawing.
Note	This product contains sodium azide: a POISONOUS AND HAZARDOUS SUBSTANCE which should be handled by trained staff only.

Applications

- Western Blot (Tissue lysate)

Western blot analysis using Kcnd2 polyclonal antibody (Cat # PAB10107) on rat brain lysate.

Gene Info — Kcnd2

Entrez GeneID [65180](#)

Gene Name Kcnd2

Gene Alias Kv4.2, RK5, Shal1

Gene Description potassium voltage gated channel, Shal-related family, member 2

Gene Ontology [Hyperlink](#)

Gene Summary Shal-related family

Other Designations potassium channel Kv4.2

Publication Reference

- [Kinetic analysis of open- and closed-state inactivation transitions in human Kv4.2 A-type potassium channels.](#)

Bahring R, Boland LM, Varghese A, Gebauer M, Pongs O.

The Journal of Physiology 2001 Aug; 535(Pt 1):65.

- [The A-type potassium channel Kv4.2 is a substrate for the mitogen-activated protein kinase ERK.](#)

Adams JP, Anderson AE, Varga AW, Dineley KT, Cook RG, Pfaffinger PJ, Sweatt JD.

Journal of Neurochemistry 2000 Dec; 75(6):2277.

Application: WB-Ti, Mouse, Mouse hippocampus

- [Cloning and tissue-specific expression of five voltage-gated potassium channel cDNAs expressed in rat heart.](#)

Roberds SL, Tamkun MM.

PNAS 1991 Mar; 88(5):1798.