

Angpt2 polyclonal antibody

Catalog # PAB10091 Size 200 uL

Applications

Immunoprecipitation

Immunoblotting of Angpt2 polyclonal antibody (Cat # PAB10091) was used at a 1:500 dilution to detect mouse Angpt2 in supernatants of mouse-angiopoietin-expressing endothelial cells.

Lane 1 - mock endothelial cells.

Lane 2 - mouse Angpt2 (clone 2-9) expressing cells.

Lane 3 - mouse Angpt1 (clone 1-15) expressing cells.

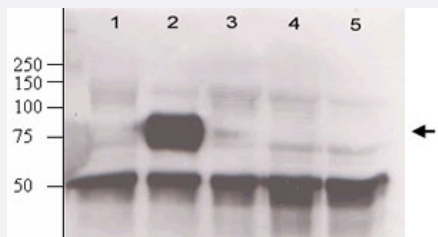
Lane 4 - mouse Angpt1 (clone 1-8) expressing cells.

Lane 5 - wt endothelial cells.

Approximately 20 ug of each lysate was loaded for 10% SDS-PAGE.

Immunoprecipitation preceded reaction with primary antibody at room temperature for 1 h.

After subsequent washing, a 1 : 5000 dilution of HRP conjugated Gt-a-Rabbit IgG preceded color development.



Specification

Product Description	Rabbit polyclonal antibody raised against synthetic peptide of Angpt2.
Immunogen	A synthetic peptide (conjugated with KLH) corresponding to N-terminus of mouse Angpt2.
Host	Rabbit
Reactivity	Human, Mouse
Form	Liquid
Quality Control Testing	Antibody Reactive Against Synthetic Peptide.
Recommend Usage	Western Blot (1:500) The optimal working dilution should be determined by the end user.

Storage Buffer	In 20 mM KH ₂ PO ₄ , 150 mM NaCl, pH 7.2 (0.1% sodium azide)
Storage Instruction	Store at 4°C. For long term storage store at -20°C. Aliquot to avoid repeated freezing and thawing.
Note	This product contains sodium azide: a POISONOUS AND HAZARDOUS SUBSTANCE which should be handled by trained staff only.

Applications

- Western Blot

- Immunoprecipitation

Immunoblotting of Angpt2 polyclonal antibody (Cat # PAB10091) was used at a 1:500 dilution to detect mouse Angpt2 in supernatants of mouse-angiopoietin-expressing endothelial cells.

Lane 1 - mock endothelial cells.

Lane 2 - mouse Angpt2 (clone 2-9) expressing cells.

Lane 3 - mouse Angpt1 (clone 1-15) expressing cells.

Lane 4 - mouse Angpt1 (clone 1-8) expressing cells.

Lane 5 - wt endothelial cells.

Approximately 20 ug of each lysate was loaded for 10% SDS-PAGE.

Immunoprecipitation preceded reaction with primary antibody at room temperature for 1 h.

After subsequent washing, a 1 : 5000 dilution of HRP conjugated Gt-a-Rabbit IgG preceded color development.

- Enzyme-linked Immunoabsorbent Assay

Gene Info — Angpt2

Entrez GeneID	11601
Gene Name	Angpt2
Gene Alias	Agpt2, Ang-2, Ang2
Gene Description	angiopoietin 2
Gene Ontology	Hyperlink
Other Designations	-

Publication Reference

- [Angiopoietin-2, a natural antagonist for Tie2 that disrupts in vivo angiogenesis.](#)

Maisonpierre PC, Suri C, Jones PF, Bartunkova S, Wiegand SJ, Radziejewski C, Compton D, McClain J, Aldrich TH, Papadopoulos N, Daly TJ, Davis S, Sato TN, Yancopoulos GD.

Science 1997 Jul; 277(5322):55.

- [Requisite role of angiopoietin-1, a ligand for the TIE2 receptor, during embryonic angiogenesis.](#)

Suri C, Jones PF, Patan S, Bartunkova S, Maisonpierre PC, Davis S, Sato TN, Yancopoulos GD.

Cell 1996 Dec; 87(7):1171.

Application: IHC, Mouse, Mouse myocardium

- [Isolation of angiopoietin-1, a ligand for the TIE2 receptor, by secretion-trap expression cloning.](#)

Davis S, Aldrich TH, Jones PF, Acheson A, Compton DL, Jain V, Ryan TE, Bruno J, Radziejewski C, Maisonpierre PC, Yancopoulos GD.

Cell 1996 Dec; 87(7):1161.

Application: WB-Tr, Monkey, COS cells