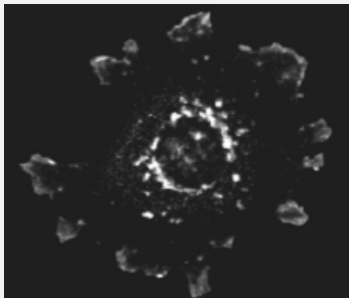


Asap1 polyclonal antibody

Catalog # PAB10088 Size 100 ug

Applications



Immunofluorescence

Immunofluorescent microscopy using Asap1 polyclonal antibody (Cat # PAB10088) shows detection of Asap1 present in mouse NIH/3T3 cells transfected with activated Src.

Specific staining is not present when antibody is pre-incubated with the immunizing peptide prior to reaction with cells.

Personal Communication. Paul Randazzo, NIH, CCR, Bethesda, MD.

Specification

| | |
|--------------------------------|---|
| Product Description | Rabbit polyclonal antibody raised against synthetic peptide of Asap1. |
| Immunogen | A synthetic peptide corresponding to amino acids 777-787 of mouse Asap1. |
| Host | Rabbit |
| Reactivity | Bovine, Chicken, Chimpanzee, Dog, Human, Mouse, Rat |
| Specificity | Reactivity occurs against both the phosphorylated and non-phosphorylated forms of the protein at residue Y782. |
| Form | Liquid |
| Quality Control Testing | Antibody Reactive Against Synthetic Peptide. |
| Recommend Usage | ELISA (1:2000-1:10000) Western Blot (1:500-1:2000) The optimal working dilution should be determined by the end user. |
| Storage Buffer | In 20 mM KH ₂ PO ₄ , 150 mM NaCl, pH 7.2 (0.01% sodium azide) |

Storage Instruction

Store at 4°C. For long term storage store at -20°C.
Aliquot to avoid repeated freezing and thawing.

Note

This product contains sodium azide: a POISONOUS AND HAZARDOUS SUBSTANCE which should be handled by trained staff only.

Applications

- Western Blot

- Immunofluorescence

Immunofluorescent microscopy using Asap1 polyclonal antibody (Cat # PAB10088) shows detection of Asap1 present in mouse NIH/3T3 cells transfected with activated Src.

Specific staining is not present when antibody is pre-incubated with the immunizing peptide prior to reaction with cells.

Personal Communication. Paul Randazzo, NIH, CCR, Bethesda, MD.

- Enzyme-linked Immunoabsorbent Assay

Gene Info — Asap1

Entrez GeneID[13196](#)**Protein Accession#**[NP_034156\(seealsoAAC98349\):Q9QWY8](#)**Gene Name**

Asap1

Gene Alias

AV239055, Ddef1, PAP, mKIAA1249, s19

Gene Description

ArfGAP with SH# domain, ankyrin repeat and PH domain1

Gene Ontology[Hyperlink](#)**Gene Summary**

O

Other Designations

development and differentiation enhancing

Publication Reference

- [Mislocalization or reduced expression of Arf GTPase-activating protein ASAP1 inhibits cell spreading and migration by influencing Arf1 GTPase cycling.](#)

Liu Y, Yerushalmi GM, Grigera PR, Parsons JT.

The Journal of Biological Chemistry 2005 Mar; 280(10):8884.

Application: IF, IP, WB-Tr, Human, HEK 293, REF52 cells

- [The tyrosine kinase Pyk2 regulates Arf1 activity by phosphorylation and inhibition of the Arf-GTPase-activating protein ASAP1.](#)

Kruljac-Letunic A, Moelleken J, Kallin A, Wieland F, Blaukat A.

The Journal of Biological Chemistry 2003 Aug; 278(32):29560.

Application: WB, Mouse, PC-12 cells, MEFs

- [The association of ASAP1, an ADP ribosylation factor-GTPase activating protein, with focal adhesion kinase contributes to the process of focal adhesion assembly.](#)

Liu Y, Loijens JC, Martin KH, Karginov AV, Parsons JT.

Molecular Biology of the Cell 2002 Jun; 13(6):2147.

Application: IF, IP, WB-Tr, Human, 10T1/2, REF52 cells