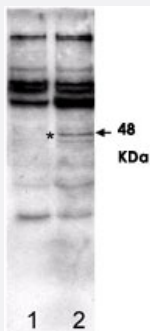


Casp2 polyclonal antibody

Catalog # PAB10086 Size 100 ug

Applications

Western Blot (Transfected lysate)



Immunoblotting of Casp2 polyclonal antibody (Cat # PAB10086) was used at a 1:750 dilution to detect rat Casp2 in transfected human 293 cell lysates by Western blot.

Asterisk indicates a 48 kDa Casp2 protein clearly detected in the rat Casp2 transfected lysate.

No reaction is observed against human Casp2.

Control (lane 1) and transfected (lane 2) lysates were loaded on a 4-20% gel for SDS-PAGE.

After primary antibody incubation and washing, a 1:5,000 dilution of HRP conjugated Gt-a-Rabbit IgG preceded color development using Amersham's substrate system.

Specification

Product Description	Rabbit polyclonal antibody raised against synthetic peptide of Casp2.
Immunogen	A synthetic peptide (conjugated with KLH) corresponding to N-terminus of rat Casp2.
Host	Rabbit
Reactivity	Mouse, Rat
Form	Liquid
Quality Control Testing	Antibody Reactive Against Synthetic Peptide.
Recommend Usage	ELISA (1:1500-1:6000) Western Blot (1:750) The optimal working dilution should be determined by the end user.
Storage Buffer	In 20 mM KH ₂ PO ₄ , 150 mM NaCl, pH 7.2 (0.01% sodium azide)

Storage Instruction

Store at 4°C. For long term storage store at -20°C.
Aliquot to avoid repeated freezing and thawing.

Note

This product contains sodium azide: a POISONOUS AND HAZARDOUS SUBSTANCE which should be handled by trained staff only.

Applications

- Western Blot (Transfected lysate)

Immunoblotting of Casp2 polyclonal antibody (Cat # PAB10086) was used at a 1:750 dilution to detect rat Casp2 in transfected human 293 cell lysates by Western blot.
Asterisk indicates a 48 kDa Casp2 protein clearly detected in the rat Casp2 transfected lysate.
No reaction is observed against human Casp2.
Control (lane 1) and transfected (lane 2) lysates were loaded on a 4-20% gel for SDS-PAGE.
After primary antibody incubation and washing, a 1:5,000 dilution of HRP conjugated Gt-a-Rabbit IgG preceded color development using Amersham's substrate system.

- Enzyme-linked Immunoabsorbent Assay

Gene Info — Casp2

Entrez GeneID	64314
Gene Name	Casp2
Gene Alias	-
Gene Description	caspase 2
Gene Ontology	Hyperlink
Other Designations	caspase-2

Publication Reference

- [Defects in regulation of apoptosis in caspase-2-deficient mice.](#)

Bergeron L, Perez GI, Macdonald G, Shi L, Sun Y, Jurisicova A, Varmuza S, Latham KE, Flaws JA, Salter JC, Hara H, Moskowitz MA, Li E, Greenberg A, Tilly JL, Yuan J.

Genes & Development 1998 May; 12(9):1304.

Application: WB-Ti, Mouse, Ovary

- [Activation of caspase-2 in apoptosis.](#)

Li H, Bergeron L, Cryns V, Pasternack MS, Zhu H, Shi L, Greenberg A, Yuan J.

The Journal of Biological Chemistry 1997 Aug; 272(34):21010.

Application: WB-Ce, Human, HeLa, Jurkat cells

- [Caspases: the executioners of apoptosis.](#)

Cohen GM.

The Biochemical Journal 1997 Aug; 326 (Pt 1):1.