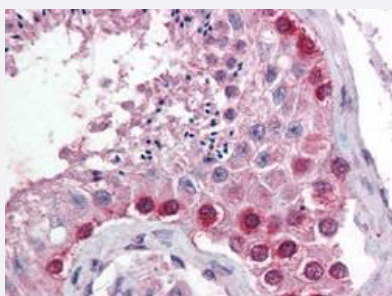


CUL4A polyclonal antibody

Catalog # PAB10038 Size 100 uL

Applications



Immunohistochemistry (Formalin/PFA-fixed paraffin-embedded sections)

Immunohistochemical staining with CUL4A polyclonal antibody (Cat # PAB10038) was diluted 1 : 500 to detect CUL4 in human testis tissue. Tissue was formalin fixed and paraffin embedded. No pre-treatment of sample was required. The image shows the localization of antibody as the precipitated red signal, with a hematoxylin purple nuclear counter stain.

Specification

Product Description	Rabbit polyclonal antibody raised against synthetic peptide of CUL4A.
Immunogen	A synthetic peptide (conjugated with KLH) corresponding to amino acids 1-20 of human CUL4A.
Host	Rabbit
Reactivity	Human, Mouse
Form	Liquid
Quality Control Testing	Antibody Reactive Against Synthetic Peptide.
Recommend Usage	ELISA (1:2000-1:10000) Western Blot (1:500-1:1000) The optimal working dilution should be determined by the end user.
Storage Buffer	In antiserum (0.01% sodium azide)
Storage Instruction	Store at 4°C. For long term storage store at -20°C. Aliquot to avoid repeated freezing and thawing.
Note	This product contains sodium azide: a POISONOUS AND HAZARDOUS SUBSTANCE which should be handled by trained staff only.

Applications

- Western Blot
- Immunohistochemistry (Formalin/PFA-fixed paraffin-embedded sections)

Immunohistochemical staining with CUL4A polyclonal antibody (Cat # PAB10038) was diluted 1 : 500 to detect CUL4 in human testis tissue. Tissue was formalin fixed and paraffin embedded. No pre-treatment of sample was required. The image shows the localization of antibody as the precipitated red signal, with a hematoxylin purple nuclear counter stain.

- Enzyme-linked Immunoabsorbent Assay

Gene Info — CUL4A

Entrez GeneID	8451
Protein Accession#	AAR13072
Gene Name	CUL4A
Gene Alias	-
Gene Description	cullin 4A
Omim ID	603137
Gene Ontology	Hyperlink
Other Designations	OTTHUMP00000018753 OTTHUMP00000018754

Publication Reference

- [ESCCAL-1 promotes cell-cycle progression by interacting with and stabilizing galectin-1 in esophageal squamous cell carcinoma.](#)

Yuanbo Cui, Ming Yan, Wei Wu, Pengju Lv, Jinwu Wang, Yanping Huo, Yanan Lou, Xiwen Ma, Jing Chang, Fangxia Guan, Wei Cao.

NPJ Precision Oncology 2022 Mar; 6(1):12.

Application: WB-Tr, Human, KYSE450 cells

- [The ubiquitin ligase activity in the DDB2 and CSA complexes is differentially regulated by the COP9 signalosome in response to DNA damage.](#)

Groisman R, Polanowska J, Kuraoka I, Sawada J, Saijo M, Drapkin R, Kisselev AF, Tanaka K, Nakatani Y.

Cell 2003 May; 113(3):357.

- [CUL-4A is critical for early embryonic development.](#)

Li B, Ruiz JC, Chun KT.

Molecular and Cellular Biology 2002 Jul; 22(14):4997.

Application: WB-Ce, Human, PLB-985 cells

- [Cullin 4A associates with the UV-damaged DNA-binding protein DDB.](#)

Shiyanov P, Nag A, Raychaudhuri P.

The Journal of Biological Chemistry 1999 Dec; 274(50):35309.

Application: WB-Ce, WB-Tr, Human, HeLa, U-2 OS cells

- [ROC1, a homolog of APC11, represents a family of cullin partners with an associated ubiquitin ligase activity.](#)

Ohta T, Michel JJ, Schottelius AJ, Xiong Y.

Molecular Cell 1999 Apr; 3(4):535.

- [Human CUL-1, but not other cullin family members, selectively interacts with SKP1 to form a complex with SKP2 and cyclin A.](#)

Michel JJ, Xiong Y.

Cell Growth & Differentiation: the Molecular Biology Journal of the American Association for Cancer 1998 Jun; 9(6):435.

Pathway

- [Nucleotide excision repair](#)
- [Ubiquitin mediated proteolysis](#)