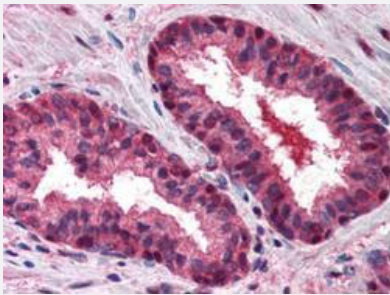


# CUL2 polyclonal antibody

Catalog # PAB10036      Size 100 uL

## Applications



### Immunohistochemistry (Formalin/PFA-fixed paraffin-embedded sections)

Immunohistochemical staining with CUL2 polyclonal antibody (Cat # PAB10036) was diluted 1 : 500 to detect CUL2 in human prostate tissue. Tissue was formalin fixed and paraffin embedded. No pre-treatment of sample was required. The image shows the localization of antibody as the precipitated red signal, with a hematoxylin purple nuclear counter stain.

## Specification

<b>Product Description</b>	Rabbit polyclonal antibody raised against synthetic peptide of CUL2.
<b>Immunogen</b>	A synthetic peptide (conjugated with KLH) corresponding to amino acids 733-745 of human CUL2.
<b>Host</b>	Rabbit
<b>Reactivity</b>	Human
<b>Form</b>	Liquid
<b>Quality Control Testing</b>	Antibody Reactive Against Synthetic Peptide.
<b>Recommend Usage</b>	ELISA (1:2000-1:10000) Western Blot (1:500-1:1000) The optimal working dilution should be determined by the end user.
<b>Storage Buffer</b>	In antiserum (0.01% sodium azide)
<b>Storage Instruction</b>	Store at 4°C. For long term storage store at -20°C. Aliquot to avoid repeated freezing and thawing.
<b>Note</b>	This product contains sodium azide: a POISONOUS AND HAZARDOUS SUBSTANCE which should be handled by trained staff only.

## Applications

- Western Blot
- Immunohistochemistry (Formalin/PFA-fixed paraffin-embedded sections)

Immunohistochemical staining with CUL2 polyclonal antibody (Cat # PAB10036) was diluted 1 : 500 to detect CUL2 in human prostate tissue. Tissue was formalin fixed and paraffin embedded. No pre-treatment of sample was required. The image shows the localization of antibody as the precipitated red signal, with a hematoxylin purple nuclear counter stain.

- Enzyme-linked Immunoabsorbent Assay

## Gene Info — CUL2

Entrez GeneID	<a href="#">8453</a>
Protein Accession#	<a href="#">NP_003582</a>
Gene Name	CUL2
Gene Alias	MGC131970
Gene Description	cullin 2
Omim ID	<a href="#">603135</a>
Gene Ontology	<a href="#">Hyperlink</a>
Other Designations	OTTHUMP00000019436 OTTHUMP00000019437 OTTHUMP00000019440 OTTHUMP00000046331

## Publication Reference

- [CUL-2 is required for the G1-to-S-phase transition and mitotic chromosome condensation in Caenorhabditis elegans.](#)

Feng H, Zhong W, Punkosdy G, Gu S, Zhou L, Seabolt EK, Kipreos ET.

Nature Cell Biology 1999 Dec; 1(8):486.

Application: IF, Caenorhabditis elegans, Embryo, Oocytes

- [ROC1, a homolog of APC11, represents a family of cullin partners with an associated ubiquitin ligase activity.](#)

Ohta T, Michel JJ, Schottelius AJ, Xiong Y.

Molecular Cell 1999 Apr; 3(4):535.

Application: IP-WB, Human, HeLa cells

- [Human CUL-1, but not other cullin family members, selectively interacts with SKP1 to form a complex with SKP2 and cyclin A.](#)

Michel JJ, Xiong Y.

Cell Growth & Differentiation: the Molecular Biology Journal of the American Association for Cancer 1998 Jun; 9(6):435.

- [Cdc53p acts in concert with Cdc4p and Cdc34p to control the G1-to-S-phase transition and identifies a conserved family of proteins.](#)

Mathias N, Johnson SL, Winey M, Adams AE, Goetsch L, Pringle JR, Byers B, Goebel MG.

Molecular and Cellular Biology 1996 Dec; 16(12):6634.

Application: WB, Yeast, Yeast cells

- [cul-1 is required for cell cycle exit in C. elegans and identifies a novel gene family.](#)

Kipreos ET, Lander LE, Wing JP, He WW, Hedgecock EM.

Cell 1996 Jun; 85(6):829.

## Pathway

- [Pathways in cancer](#)
- [Renal cell carcinoma](#)
- [Ubiquitin mediated proteolysis](#)

## Disease

- [Alzheimer Disease](#)
- [Anoxia](#)
- [Crohn Disease](#)
- [Genetic Predisposition to Disease](#)
- [Inflammatory Bowel Diseases](#)

- [Microsatellite Instability](#)
- [Neoplasms](#)