

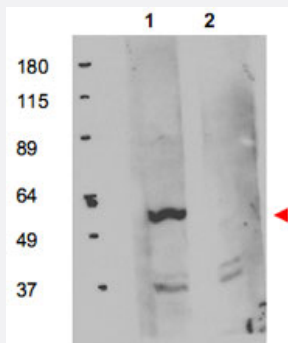
FKBP8 polyclonal antibody

Catalog # PAB10013

Size 100 ug

Applications

Western Blot



Western blot using FKBP8 polyclonal antibody (Cat # PAB10013) shows detection of exogenous FKBP8 in 50 ug of HEK293T whole cell lysate (Lane 1).

The results of peptide competition are shown in lane 2 where no specific staining is noted after the antibody is first incubated for 1h with the immunizing peptide in 5% BLOTTO prior to reaction with the membrane.

The membrane was probed with the primary antibody at a 1 : 1,000 dilution in 5% BLOTTO at 4°C, overnight.

Personal Communication, Olga Aprelikova, CCR-NCI, Bethesda, MD.

Specification

Product Description Rabbit polyclonal antibody raised against synthetic peptide of FKBP8.

Immunogen A synthetic peptide corresponding to internal region of human FKBP8.

Host Rabbit

Reactivity Human, Mouse, Rat

Form Liquid

Quality Control Testing Antibody Reactive Against Synthetic Peptide.

Recommend Usage ELISA (1:25000)
Western Blot (1:500-1:2000)
The optimal working dilution should be determined by the end user.

Storage Buffer In 20 mM KH₂PO₄, 150 mM NaCl, pH 7.2 (0.01% sodium azide)

Storage Instruction

Store at 4°C. For long term storage store at -20°C.
Aliquot to avoid repeated freezing and thawing.

Note

This product contains sodium azide: a POISONOUS AND HAZARDOUS SUBSTANCE which should be handled by trained staff only.

Applications

- Western Blot

Western blot using FKBP8 polyclonal antibody (Cat # PAB10013) shows detection of exogenous FKBP8 in 50 ug of HEK293T whole cell lysate (Lane 1).

The results of peptide competition are shown in lane 2 where no specific staining is noted after the antibody is first incubated for 1h with the immunizing peptide in 5% BLOTTO prior to reaction with the membrane.

The membrane was probed with the primary antibody at a 1 : 1,000 dilution in 5% BLOTTO at 4°C, overnight.

Personal Communication, Olga Aprelikova, CCR-NCI, Bethesda, MD.

- Immunohistochemistry

- Enzyme-linked Immunoabsorbent Assay

Gene Info — FKBP8

Entrez GeneID [23770](#)

Protein Accession# [NP_036313;Q86YK6](#)

Gene Name FKBP8

Gene Alias FKBP38, FKBP38

Gene Description FK506 binding protein 8, 38kDa

Omim ID [604840](#)

Gene Ontology [Hyperlink](#)

Gene Summary The protein encoded by this gene is a member of the immunophilin protein family, which play a role in immunoregulation and basic cellular processes involving protein folding and trafficking. Unlike the other members of the family, this encoded protein does not seem to have PPlase/rotamase activity. It may have a role in neurons associated with memory function. [provided by RefSeq]

Other Designations FK506 binding protein 8 (38kD)|FK506-binding protein 8|FK506-binding protein 8 (38kD)

Publication Reference

- [Bcl-2 localized at the nuclear compartment induces apoptosis after transient overexpression.](#)

Portier BP, Tagliatela G.

The Journal of Biological Chemistry 2006 Dec; 281(52):40493.

- [Hepatitis C virus RNA replication is regulated by FKBP8 and Hsp90.](#)

Okamoto T, Nishimura Y, Ichimura T, Suzuki K, Miyamura T, Suzuki T, Moriishi K, Matsuura Y.

The EMBO Journal 2006 Oct; 25(20):5015.

Application: IP, WB, Human, HEK 293T cells

- [Hepatitis C virus non-structural protein NS5A interacts with FKBP38 and inhibits apoptosis in Huh7 hepatoma cells.](#)

Wang J, Tong W, Zhang X, Chen L, Yi Z, Pan T, Hu Y, Xiang L, Yuan Z.

FEBS Letters 2006 Aug; 580(18):4392.

Application: WB-Tr, Monkey, COS-7, Huh7 cells