

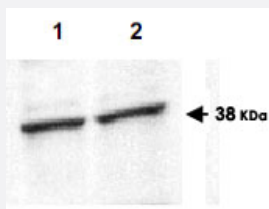
EIF3F polyclonal antibody

Catalog # PAB10008

Size 100 ug

Applications

Western Blot (Cell lysate)



Western blot using EIF3F polyclonal antibody (Cat # PAB10008) shows detection of endogenous EIF3F in lysates from both control HeLa cells (lane 1) and HeLa cells transformed with the kinase cdk11 (lane 2).

Cdk11 is responsible for phosphorylating EIF3F in vivo.

After SDS-PAGE and transfer, the membrane was probed with the primary antibody diluted to 1 : 200.

This antibody recognizes both phosphorylated and non-phosphorylated eIF3f. Personal Communication, Jiaqi Shi, Univ. Arizona, Tucson, AZ.

Specification

Product Description	Rabbit polyclonal antibody raised against synthetic peptide of EIF3F.
Immunogen	A synthetic peptide corresponding to amino acids 114-125 of human EIF3F.
Host	Rabbit
Reactivity	Bovine, Chicken, Chimpanzee, Fruit fly, Human, Mouse, Pufferfishes, Rat
Form	Liquid
Quality Control Testing	Antibody Reactive Against Synthetic Peptide.
Recommend Usage	ELISA (1:10000-1:40000) Western Blot (1:200-1:2000) The optimal working dilution should be determined by the end user.
Storage Buffer	In 20 mM KH ₂ PO ₄ , 150 mM NaCl, pH 7.2 (0.01% sodium azide)
Storage Instruction	Store at 4°C. For long term storage store at -20°C. Aliquot to avoid repeated freezing and thawing.

Note

This product contains sodium azide: a POISONOUS AND HAZARDOUS SUBSTANCE which should be handled by trained staff only.

Applications

- Western Blot (Cell lysate)

Western blot using EIF3F polyclonal antibody (Cat # PAB10008) shows detection of endogenous EIF3F in lysates from both control HeLa cells (lane 1) and HeLa cells transformed with the kinase cdk11 (lane 2).

Cdk11 is responsible for phosphorylating EIF3F in vivo.

After SDS-PAGE and transfer, the membrane was probed with the primary antibody diluted to 1 : 200.

This antibody recognizes both phosphorylated and non-phosphorylated eIF3f.

Personal Communication, Jiaqi Shi, Univ. Arizona, Tucson, AZ.

- Enzyme-linked Immunoabsorbent Assay

Gene Info — EIF3F

Entrez GeneID	8665
---------------	----------------------

Protein Accession#	O00303
--------------------	------------------------

Gene Name	EIF3F
-----------	-------

Gene Alias	EIF3S5, eIF3-p47
------------	------------------

Gene Description	eukaryotic translation initiation factor 3, subunit F
------------------	---

Omim ID	603914
---------	------------------------

Gene Ontology	Hyperlink
---------------	---------------------------

Gene Summary	O
--------------	---

Other Designations	eIF3-epsilon eukaryotic translation initiation factor 3, subunit 5 (epsilon, 47kD) eukaryotic translation initiation factor 3, subunit 5 epsilon, 47kDa
--------------------	---

Publication Reference

- [Structure of cDNAs encoding human eukaryotic initiation factor 3 subunits. Possible roles in RNA binding and macromolecular assembly.](#)

Asano K, Vornlocher HP, Richter-Cook NJ, Merrick WC, Hinnebusch AG, Hershey JW.

The Journal of Biological Chemistry 1997 Oct; 272(43):27042.

Application: WB-Ce, Human, HeLa cells