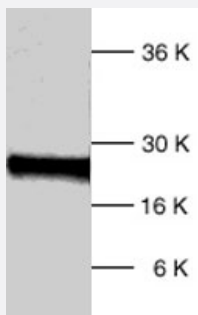


# DIABLO polyclonal antibody

Catalog # PAB0847

Size 200 ug

## Applications



### Western Blot (Cell lysate)

Western blot analysis of human DIABLO polyclonal antibody (Cat # PAB0847) expression in HL-60 whole cell lysates.

## Specification

<b>Product Description</b>	Rabbit polyclonal antibody raised against a synthetic peptide of DIABLO.
<b>Immunogen</b>	A synthetic peptide (conjugated with KLH) corresponding to C-terminus of human DIABLO.
<b>Host</b>	Rabbit
<b>Reactivity</b>	Human
<b>Form</b>	Liquid
<b>Recommend Usage</b>	Western Blot (1:200) The optimal working dilution should be determined by the end user.
<b>Storage Buffer</b>	In PBS (0.2% gelatin, 0.09% sodium azide)
<b>Storage Instruction</b>	Store at 4°C. Do not freeze.
<b>Note</b>	This product contains sodium azide: a POISONOUS AND HAZARDOUS SUBSTANCE which should be handled by trained staff only.

## Applications

- Western Blot (Cell lysate)

Western blot analysis of human DIABLO polyclonal antibody (Cat # PAB0847) expression in HL-60 whole cell lysates.

## Gene Info — DIABLO

Entrez GeneID	<a href="#">56616</a>
Gene Name	DIABLO
Gene Alias	DIABLO-S, FLJ10537, FLJ25049, SMAC, SMAC3
Gene Description	diablo homolog (Drosophila)
Omim ID	<a href="#">605219</a>
Gene Ontology	<a href="#">Hyperlink</a>
Gene Summary	This gene encodes an inhibitor of apoptosis protein (IAP)-binding protein. The encoded mitochondrial protein enters the cytosol when cells undergo apoptosis, and it moderates the caspase inhibition of IAPs. Multiple polyadenylation sites have been found for this gene. Four alternatively spliced transcript variants have been described for this gene, with two of them encoding different isoforms and the other two probably not encoding a protein. [provided by RefSeq]
Other Designations	0610041G12Rik diablo direct IAP-binding protein with low pI mitochondrial Smac protein second mitochondria-derived activator of caspase

## Publication Reference

- [Protein kinase CK2alpha as an unfavorable prognostic marker and novel therapeutic target in acute myeloid leukemia.](#)

Kim JS, Eom JI, Cheong JW, Choi AJ, Lee JK, Yang WI, Min YH.

Clinical Cancer Research 2007 Feb; 13(3):1019.

## Disease

- [Cardiovascular Diseases](#)
- [Diabetes Mellitus](#)

- [Edema](#)