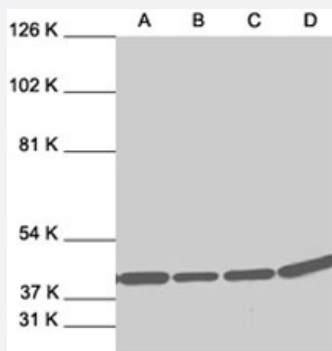


Mapk1 polyclonal antibody

Catalog # PAB0825 Size 200 ug

Applications



Western Blot

Western blot analysis of Mapk1 polyclonal antibody (Cat # PAB0825) expression in A-431 (A) , HeLa (B) , HL-60 (C) and NIH/3T3 (D) whole cell lysates.

Specification

Product Description	Rabbit polyclonal antibody raised against a synthetic peptide of Mapk1.
Immunogen	A synthetic peptide (conjugated with KLH) corresponding to C-terminus of rat Mapk1.
Host	Rabbit
Reactivity	Rat
Specificity	This antibody reacts with ERK2 p42 and to a lesser extent ERK1 p44.
Form	Liquid
Recommend Usage	Western Blot (1:400) The optimal working dilution should be determined by the end user.
Storage Buffer	In PBS (0.2% gelatin, 0.09% sodium azide)
Storage Instruction	Store at 4°C. Do not freeze.
Note	This product contains sodium azide: a POISONOUS AND HAZARDOUS SUBSTANCE which should be handled by trained staff only.

Applications

- Western Blot (Cell lysate)

- Western Blot

Western blot analysis of Mapk1 polyclonal antibody (Cat # PAB0825) expression in A-431 (A) , HeLa (B) , HL-60 (C) and NIH/3T3 (D) whole cell lysates.

Gene Info — Mapk1

Entrez GeneID	116590
---------------	------------------------

Gene Name	Mapk1
-----------	-------

Gene Alias	Erk2
------------	------

Gene Description	mitogen activated protein kinase 1
------------------	------------------------------------

Gene Ontology	Hyperlink
---------------	---------------------------

Other Designations	extracellular-signal-regulated kinase 2
--------------------	---