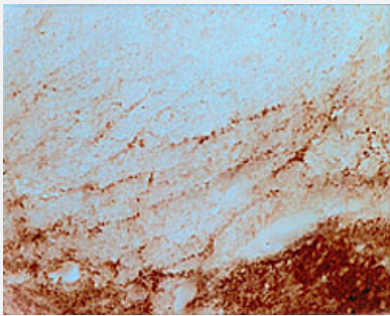


SNCB polyclonal antibody

Catalog # PAB0754

Size 100 uL

Applications



Immunohistochemistry

Immunohistochemical detection of SNCB in rat spinal cord using sheep SNCB polyclonal antibody (Cat # PAB0754) at a dilution of 1 : 4000.

Specification

Product Description	Sheep polyclonal antibody raised against synthetic peptide of SNCB.
Immunogen	A synthetic peptide (conjugated with diptheria toxoid) corresponding to amino acids 108-125 of human SNCB.
Sequence	IEPLMEPEGSYEDPPQE
Host	Sheep
Reactivity	Human, Rat
Specificity	Known to be specific to beta synuclein.
Form	Lyophilized
Recommend Usage	Immunohistochemistry (1:3000-1:8000) The optimal working dilution should be determined by the end user.
Storage Buffer	Lyophilized from PBS
Storage Instruction	Store at 4°C on dry atmosphere. After reconstitution with deionized water, store at -20°C or lower. Aliquot to avoid repeated freezing and thawing.

Applications

- Immunohistochemistry

Immunohistochemical detection of SNCB in rat spinal cord using sheep SNCB polyclonal antibody (Cat # PAB0754) at a dilution of 1 : 4000.

Gene Info — SNCB

Entrez GeneID	6620
Protein Accession#	Q16143
Gene Name	SNCB
Gene Alias	-
Gene Description	synuclein, beta
Omim ID	127750 602569
Gene Ontology	Hyperlink
Other Designations	beta-synuclein

Disease

- [Parkinson disease](#)