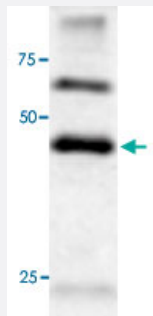


ATG4B polyclonal antibody

Catalog # PAB0738

Size 100 uL

Applications



Western Blot (Cell lysate)

Western blot on 293 cell lysate using rabbit ATG4B polyclonal antibody (Cat # PAB0738) at a dilution of 1 : 100.

Specification

Product Description	Rabbit polyclonal antibody raised against synthetic peptide of ATG4B.
Immunogen	A synthetic peptide (conjugated with Blue Carrier Protein) corresponding to N-terminus of human ATG4B.
Host	Rabbit
Reactivity	Human, Rat
Form	Lyophilized
Recommend Usage	Immunohistochemistry (1:100-1:2000) Immunofluorescence (1:100-1:2000) Western Blot (1:100-1:2000) The optimal working dilution should be determined by the end user.
Storage Buffer	Lyophilized from PBS
Storage Instruction	Store at 4°C on dry atmosphere. After reconstitution with deionized water, store at -20°C or lower. Aliquot to avoid repeated freezing and thawing.

Applications

- Western Blot (Cell lysate)

Western blot on 293 cell lysate using rabbit ATG4B polyclonal antibody (Cat # PAB0738) at a dilution of 1 : 100.

- Immunohistochemistry (Frozen sections)

- Immunofluorescence

Gene Info — ATG4B

Entrez GeneID [23192](#)

Protein Accession# [Q9Y4P1;Q8BGE6;71043632](#)

Gene Name ATG4B

Gene Alias APG4B, AUTL1, MGC1353

Gene Description ATG4 autophagy related 4 homolog B (S. cerevisiae)

Omim ID [611338](#)

Gene Ontology [Hyperlink](#)

Gene Summary Autophagy is the process by which endogenous proteins and damaged organelles are destroyed intracellularly. Autophagy is postulated to be essential for cell homeostasis and cell remodeling during differentiation, metamorphosis, non-apoptotic cell death, and aging. Reduced levels of autophagy have been described in some malignant tumors, and a role for autophagy in controlling the unregulated cell growth linked to cancer has been proposed. This gene encodes a member of the autophagin protein family. The encoded protein is also designated as a member of the C-54 family of cysteine proteases. Alternate transcriptional splice variants, encoding different isoforms, have been characterized. [provided by RefSeq]

Other Designations APG4 autophagy 4 homolog B|autophagin-1

Pathway

- [Regulation of autophagy](#)