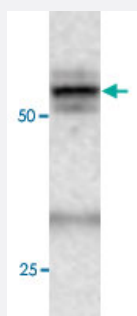


ATG4C polyclonal antibody

Catalog # PAB0737

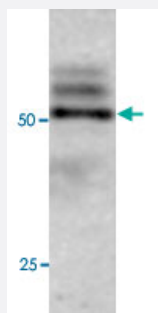
Size 100 uL

Applications



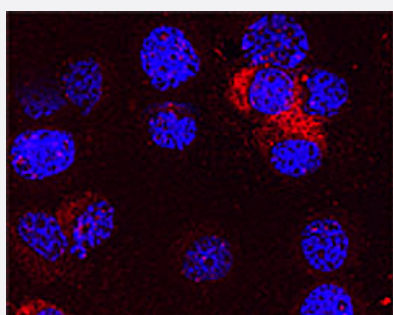
Western Blot (Tissue lysate)

Western blot under reducing conditions on rat liver lysate using rabbit ATG4C polyclonal antibody (Cat # PAB0737) at a dilution of 1 : 100.



Western Blot (Cell lysate)

Western blot under reducing conditions on Olfactory cell line (Odora) lysate using rabbit ATG4C polyclonal antibody (Cat # PAB0737) at a dilution of 1 : 100.



Immunofluorescence

Confocal microscopy on immunofluorescently detected ATG4C in HL-60 cell line using rabbit ATG4C polyclonal antibody (Cat # PAB0737) at a dilution of 1 : 100, incubated for 1 hr at room temperature. The cells stained for ATG4C appear in red. The cells were then counter stained with Hoechst Dye (blue colour) . Here, the merged picture is presented.

Specification

Product Description

Rabbit polyclonal antibody raised against synthetic peptide of ATG4C.

Immunogen	A synthetic peptide (conjugated with Blue Carrier Protein) corresponding to C-terminus of human ATG4C.
Host	Rabbit
Reactivity	Human, Rat
Form	Lyophilized
Recommend Usage	Immunohistochemistry (1:100-1:2000) Immunofluorescence (1:100-1:2000) Western Blot (1:100-1:2000) The optimal working dilution should be determined by the end user.
Storage Buffer	Lyophilized from PBS
Storage Instruction	Store at 4°C on dry atmosphere. After reconstitution with deionized water, store at -20°C or lower. Aliquot to avoid repeated freezing and thawing.

Applications

- Western Blot (Tissue lysate)

Western blot under reducing conditions on rat liver lysate using rabbit ATG4C polyclonal antibody (Cat # PAB0737) at a dilution of 1 : 100.

- Western Blot (Cell lysate)

Western blot under reducing conditions on Olfactory cell line (Odora) lysate using rabbit ATG4C polyclonal antibody (Cat # PAB0737) at a dilution of 1 : 100.

- Immunohistochemistry (Frozen sections)

- Immunofluorescence

Confocal microscopy on immunofluorescently detected ATG4C in HL-60 cell line using rabbit ATG4C polyclonal antibody (Cat # PAB0737) at a dilution of 1 : 100, incubated for 1 hr at room temperature. The cells stained for ATG4C appear in red. The cells were then counter stained with Hoechst Dye (blue colour) . Here, the merged picture is presented.

Gene Info — ATG4C

Entrez GeneID	84938
Protein Accession#	Q96DT6;Q811C2;109475174
Gene Name	ATG4C

Gene Alias	APG4-C, APG4C, AUTL1, AUTL3, FLJ14867
Gene Description	ATG4 autophagy related 4 homolog C (S. cerevisiae)
Omim ID	611339
Gene Ontology	Hyperlink
Gene Summary	<p>Autophagy is the process by which endogenous proteins and damaged organelles are destroyed intracellularly. Autophagy is postulated to be essential for cell homeostasis and cell remodeling during differentiation, metamorphosis, non-apoptotic cell death, and aging. Reduced levels of autophagy have been described in some malignant tumors, and a role for autophagy in controlling the unregulated cell growth linked to cancer has been proposed. This gene encodes a member of the autophagin protein family. The encoded protein is also designated as a member of the C-54 family of cysteine proteases. Alternate transcriptional splice variants, encoding the same protein, have been characterized. [provided by RefSeq]</p>
Other Designations	APG4 autophagy 4 homolog C AUT-like 1, cysteine endopeptidase AUT-like 3 cysteine endopeptidase OTTHUMP00000010715 autophagin-3 autophagy-related cysteine endopeptidase 3

Pathway

- [Regulation of autophagy](#)