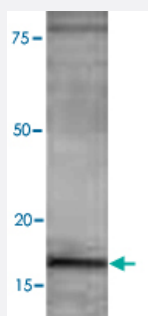


# MAP1LC3B polyclonal antibody

Catalog # PAB0736

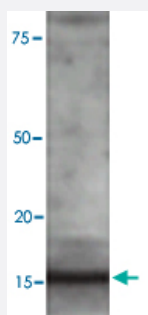
Size 100 uL

## Applications



### Western Blot (Cell lysate)

Western blot under reducing conditions on Olfactory cell line (Odora) lysate using rabbit MAP1LC3B polyclonal antibody (Cat # PAB0736) at a dilution of 1 : 100.



### Western Blot (Cell lysate)

Western blot under reducing conditions on 293 cell lysate using rabbit MAP1LC3B polyclonal antibody (Cat # PAB0736) at a dilution of 1 : 100.

## Specification

<b>Product Description</b>	Rabbit polyclonal antibody raised against synthetic peptide of MAP1LC3B.
<b>Immunogen</b>	A synthetic peptide (conjugated with Blue Carrier Protein) corresponding to N-terminus of human MAP1LC3B.
<b>Host</b>	Rabbit
<b>Reactivity</b>	Human, Rat
<b>Form</b>	Lyophilized

<b>Recommend Usage</b>	Immunohistochemistry (1:100-1:1000) Immunofluorescence (1:100-1:1000) Western Blot (1:100-1:1000) The optimal working dilution should be determined by the end user.
------------------------	---

<b>Storage Buffer</b>	Lyophilized from PBS
-----------------------	----------------------

<b>Storage Instruction</b>	Store at 4°C on dry atmosphere. After reconstitution with deionized water, store at -20°C or lower. Aliquot to avoid repeated freezing and thawing.
----------------------------	---

## Applications

- Western Blot (Cell lysate)

Western blot under reducing conditions on Olfactory cell line (Odora) lysate using rabbit MAP1LC3B polyclonal antibody (Cat # PAB0736) at a dilution of 1 : 100.

- Western Blot (Cell lysate)

Western blot under reducing conditions on 293 cell lysate using rabbit MAP1LC3B polyclonal antibody (Cat # PAB0736) at a dilution of 1 : 100.

- Immunohistochemistry (Frozen sections)

- Immunofluorescence

## Gene Info — MAP1LC3B

<b>Entrez GeneID</b>	<a href="#">81631</a>
----------------------	-----------------------

<b>Protein Accession#</b>	<a href="#">Q9GZQ8;Q9CQV6;Q62625</a>
---------------------------	--------------------------------------

<b>Gene Name</b>	MAP1LC3B
------------------	----------

<b>Gene Alias</b>	LC3B, MAP1A/1BLC3
-------------------	-------------------

<b>Gene Description</b>	microtubule-associated protein 1 light chain 3 beta
-------------------------	---

<b>Gene Ontology</b>	<a href="#">Hyperlink</a>
----------------------	---------------------------

<b>Gene Summary</b>	The product of this gene is a subunit of neuronal microtubule-associated MAP1A and MAP1B proteins, which are involved in microtubule assembly and important for neurogenesis. Studies on the rat homolog implicate a role for this gene in autophagy, a process that involves the bulk degradation of cytoplasmic component. [provided by RefSeq]
---------------------	---

**Other Designations**microtubule-associated proteins 1A/1B light chain 3

---