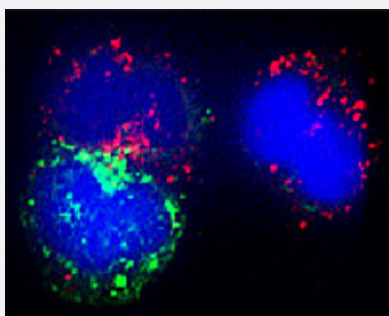


# BECN1 polyclonal antibody

Catalog # PAB0728

Size 100 uL

## Applications



### Immunofluorescence

Confocal microscopy on immunofluorescently detected BECN1 in cytospin - isolated human white blood cells using rabbit BECN1 polyclonal antibody (Cat # PAB0728) at a dilution of 1 : 200, incubated for 1 hr at room temperature. The cells were double-stained for BECN1 appearing in red and Myeloperoxidase appearing in green. The cells were counter stained with Hoechst Dye (blue colour) . Here , the merged picture is presented.

## Specification

<b>Product Description</b>	Rabbit polyclonal antibody raised against synthetic peptide of BECN1.
<b>Immunogen</b>	A synthetic peptide (conjugated with Blue Carrier Protein) corresponding to C-terminus of human BECN1.
<b>Host</b>	Rabbit
<b>Reactivity</b>	Human
<b>Specificity</b>	Specific for Beclin-1.
<b>Form</b>	Lyophilized
<b>Recommend Usage</b>	Immunohistochemistry (1:100-1:2000) Immunofluorescence (1:100-1:2000) Western Blot (1:100-1:2000) The optimal working dilution should be determined by the end user.
<b>Storage Buffer</b>	Lyophilized from PBS
<b>Storage Instruction</b>	Store at 4°C on dry atmosphere. After reconstitution with deionized water, store at -20°C or lower. Aliquot to avoid repeated freezing and thawing.

## Applications

- Western Blot
- Immunohistochemistry (Frozen sections)
- Immunofluorescence

Confocal microscopy on immunofluorescently detected BECN1 in cytospin - isolated human white blood cells using rabbit BECN1 polyclonal antibody (Cat # PAB0728) at a dilution of 1 : 200, incubated for 1 hr at room temperature. The cells were double-stained for BECN1 appearing in red and Myeloperoxidase appearing in green. The cells were counter stained with Hoechst Dye (blue colour) . Here , the merged picture is presented.

## Gene Info — BECN1

Entrez GeneID	<a href="#">8678</a>
Protein Accession#	<a href="#">Q14457</a>
Gene Name	BECN1
Gene Alias	ATG6, VPS30, beclin1
Gene Description	beclin 1, autophagy related
Omim ID	<a href="#">604378</a>
Gene Ontology	<a href="#">Hyperlink</a>
Gene Summary	O
Other Designations	ATG6 autophagy related 6 homolog beclin 1 beclin 1 (coiled-coil, moesin-like BCL2 interacting protein) beclin 1 (coiled-coil, moesin-like BCL2-interacting protein)

## Pathway

- [Regulation of autophagy](#)

## Disease

- [Alzheimer disease](#)

- [Huntington Disease](#)