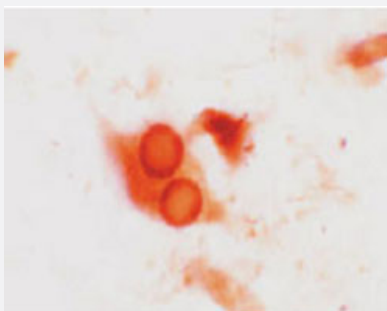


# SNCAIP polyclonal antibody

Catalog # PAB0717

Size 100 uL

## Applications



### Immunohistochemistry

Immunohistochemical staining of SNCAIP positive Lewy bodies in dorsal rache nucleus in a case of Parkinson's disease using rabbit SNCAIP polyclonal antibody (Cat # PAB0717) .

## Specification

<b>Product Description</b>	Rabbit polyclonal antibody raised against synthetic peptide of SNCAIP.
<b>Immunogen</b>	A synthetic peptide (conjugated with KLH) corresponding to amino acids 829-847 of human SNCAIP .
<b>Sequence</b>	SLELNGEKDKDKGRTLQRT
<b>Host</b>	Rabbit
<b>Reactivity</b>	Human, Rat
<b>Form</b>	Lyophilized
<b>Recommend Usage</b>	Immunohistochemistry (1:1000-1:2000) The optimal dilution should be determined by the end user.
<b>Storage Buffer</b>	Lyophilized from PBS
<b>Storage Instruction</b>	Store at 4°C on dry atmosphere. After reconstitution with deionized water, store at -20°C or lower. Aliquot to avoid repeated freezing and thawing.

## Applications

- Immunohistochemistry

Immunohistochemical staining of SNCAIP positive Lewy bodies in dorsal rache nucleus in a case of Parkinson's disease using rabbit SNCAIP polyclonal antibody (Cat # PAB0717) .

## Gene Info — SNCAIP

**Entrez GeneID** [9627](#)

**Protein Accession#** [Q6L986](#)

**Gene Name** SNCAIP

**Gene Alias** MGC39814, SYPH1

**Gene Description** synuclein, alpha interacting protein

**Omim ID** [168600 603779](#)

**Gene Ontology** [Hyperlink](#)

**Gene Summary** This gene encodes a protein containing several protein-protein interaction domains, including ank yrin-like repeats, a coiled-coil domain, and an ATP/GTP-binding motif. The encoded protein inter acts with alpha-synuclein in neuronal tissue and may play a role in the formation of cytoplasmic inc lusions and neurodegeneration. A mutation in this gene has been associated with Parkinson's dis ease. Alternatively spliced transcript variants encoding different isoforms of this gene have been described, but their full-length nature has yet to be determined. [provided by RefSeq

**Other Designations** synphilin|synphilin-1|synuclein alpha interacting protein

## Disease

- [Genetic Predisposition to Disease](#)
- [Parkinson disease](#)
- [Tobacco Use Disorder](#)