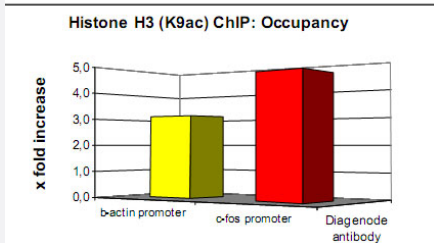
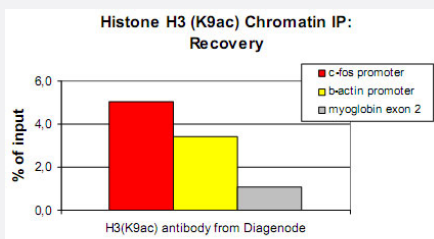


# Histone H3 (K9ac) polyclonal antibody

Catalog # PAB0651

Size 50 ug

## Applications



## ChIP

ChIP results obtained with the Histone H3 (K9ac) polyclonal antibody (Cat # PAB0651). ChIP assays were performed using U-2 OS cells.

## Immunofluorescence

Immunofluorescence with the Histone H3 (K9ac) polyclonal antibody (Cat # PAB0651) .

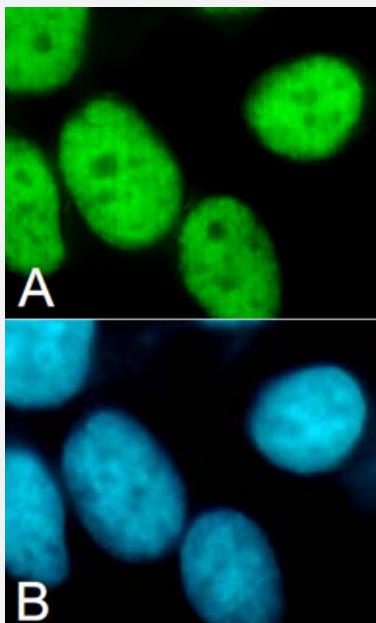
HeLa cells were stained with antibody directed against modified histone and with DAPI.

Cells were methanol fixed for 10 minutes and then blocked with 1% BSA containing PBS.

The fixation step stabilises the morphology of the cells and permeabilizes membranes as well.

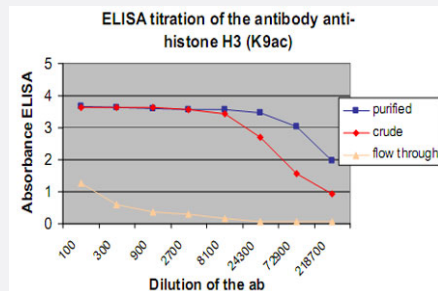
(A) Cells were immunofluorescently labelled with the Histone H3 (K9ac) polyclonal antibody (Cat # PAB0651) (diluted 1 : 200 and incubated for 1 hour at room temperature) followed by goat anti-rabbit antibody conjugated to FITC. (B) Nuclei were DAPI stained to label specifically the DNA.

In both cases, the nuclei are clearly stained.



## Enzyme-linked Immunoabsorbent Assay

ELISA, which stands for Enzyme-Linked Immunosorbent Assay, is a quantitative method used to determine the concentration of a primary antibody in sera by using a series of dilutions of sera in antigen coated wells. The antigen used in this case is the peptide including the histone H3 [acetylated lysin 9]. We plotted the absorbance versus antiserum dilution to estimate the titer of the antibody.



## Specification

<b>Product Description</b>	Rabbit polyclonal antibody raised against synthetic peptide of histone H3 (acetylated lysine 9).
<b>Immunogen</b>	A synthetic peptide (conjugated with KLH) containing the acetylated lysine 9 (or [K9ac]) of human histone H3.
<b>Host</b>	Rabbit
<b>Reactivity</b>	Human
<b>Form</b>	Liquid
<b>Recommend Usage</b>	The optimal working dilution should be determined by the end user.
<b>Storage Buffer</b>	In PBS (0.1% BSA, 0.01% thimerosal)
<b>Storage Instruction</b>	Store at -20°C. Aliquot to avoid repeated freezing and thawing.
<b>Note</b>	This product contains thimerosal: a POISONOUS AND HAZARDOUS SUBSTANCE which should be handled by trained staff only.

## Applications

### ChIP

ChIP results obtained with the Histone H3 (K9ac) polyclonal antibody (Cat # PAB0651). ChIP assays were performed using U-2 OS cells.

- Immunofluorescence

Immunofluorescence with the Histone H3 (K9ac) polyclonal antibody (Cat # PAB0651) .

HeLa cells were stained with antibody directed against modified histone and with DAPI.

Cells were methanol fixed for 10 minutes and then blocked with 1% BSA containing PBS.

The fixation step stabilises the morphology of the cells and permeabilizes membranes as well.

(A) Cells were immunofluorescently labelled with the Histone H3 (K9ac) polyclonal antibody (Cat # PAB0651) (diluted 1 : 200 and incubated for 1 hour at room temperature) followed by goat anti-rabbit antibody conjugated to FITC.

(B) Nuclei were DAPI stained to label specifically the DNA.

In both cases, the nuclei are clearly stained.

- Enzyme-linked Immunoabsorbent Assay

ELISA, which stands for Enzyme-Linked Immunosorbent Assay, is a quantitative method used to determine the concentration of a primary antibody in sera by using a series of dilutions of sera in antigen coated wells. The antigen used in this case is the peptide including the histone H3 [acetylated lysin 9]. We plotted the absorbance versus antiserum dilution to estimate the titer of the antibody.

- Dot Blot (Peptide)