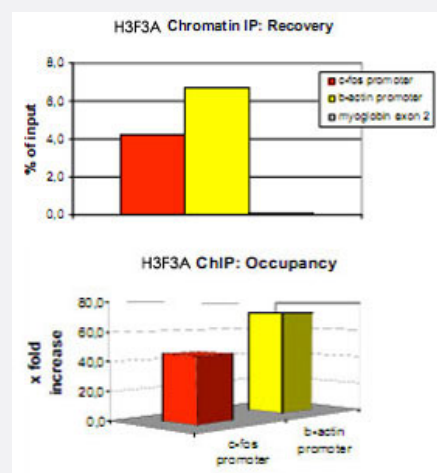


# Histone H3 (K4me3) polyclonal antibody

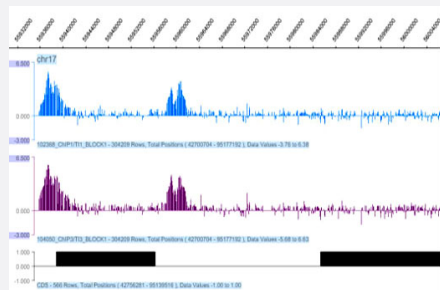
Catalog # PAB0650      Size 50 ug

## Applications



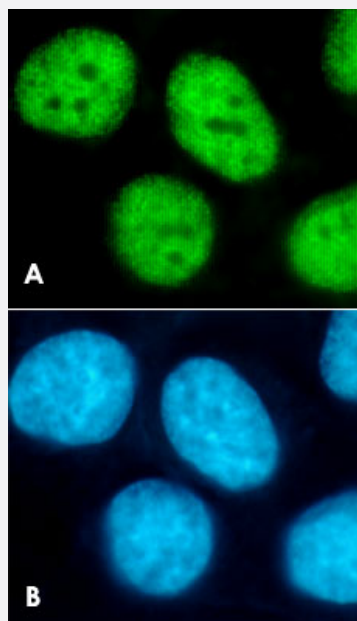
## ChIP

ChIP results obtained with the Histone H3 (K4me3) polyclonal antibody (Cat # PAB0650). ChIP assays were performed using U-2 OS cells.



## ChIP on chip

ChIP-on-chip profile using the Histone H3 (K4me3) polyclonal antibody (Cat # PAB0650). Here above the Histone H3 (K4me3) ChIP-on-chip profile of an ubiquitin-like gene (GenBank AK147046) on chromosome 17 of two different mouse cell lines (ES14 in blue and LF2 in purple) is presented.



## Immunofluorescence

Immunofluorescence with the Histone H3 (K4me3) polyclonal antibody (Cat # PAB0650).

HeLa cells were stained with antibody directed against modified histone and with DAPI.

Cells were methanol fixed for 10 minutes and then blocked with 1% BSA containing PBS.

The fixation step stabilises the morphology of the cells and permeabilizes membranes as well.

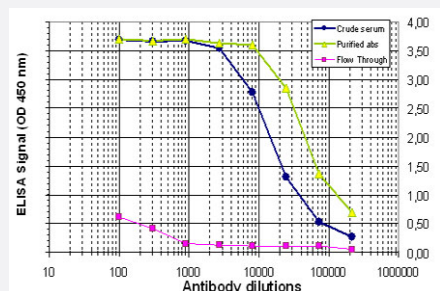
(A) Cells were immunofluorescently labelled with the Histone H3 (K4me3) polyclonal antibody (Cat # PAB0650) (diluted 1 : 200 and incubated for 1 hour at room temperature) followed by goat anti-rabbit antibody conjugated to FITC.

(B) Nuclei were DAPI stained to label specifically the DNA.

In both cases, the nuclei are clearly stained.

## Enzyme-linked Immunoabsorbent Assay

ELISA is a quantitative method used to determine the concentration of a primary antibody in sera by using a series of dilutions of sera in antigen coated wells. The antigen used in this case is the peptide including the Histone H3 (K4me3) [ trimethylated lysine 4 ]. We plotted the absorbance versus antiserum dilution to estimate the titer of the affinity purified antibody : 1 : 50,000.



## Specification

Product Description	Rabbit polyclonal antibody raised against synthetic peptide of histone H3 (trimethylated lysine 4).
Immunogen	A synthetic peptide (conjugated with KLH) containing the trimethylated lysine 4 (or [K4me3]) of human histone H3.
Host	Rabbit
Reactivity	Human
Form	Liquid
Recommend Usage	The optimal working dilution should be determined by the end user.
Storage Buffer	In PBS (0.1% BSA, 0.01% thimerosal)
Storage Instruction	Store at -20°C. Aliquot to avoid repeated freezing and thawing.

**Note**

This product contains thimerosal: a POISONOUS AND HAZARDOUS SUBSTANCE which should be handled by trained staff only.

## Applications

- ChIP

ChIP results obtained with the Histone H3 (K4me3) polyclonal antibody (Cat # PAB0650). ChIP assays were performed using U-2 OS cells.

- ChIP on chip

ChIP-on-chip profile using the Histone H3 (K4me3) polyclonal antibody (Cat # PAB0650). Here above the Histone H3 (K4me3) ChIP-on-chip profile of an ubiquitin-like gene (GenBank AK147046) on chromosome 17 of two different mouse cell lines (ES14 in blue and LF2 in purple) is presented.

- Immunofluorescence

Immunofluorescence with the Histone H3 (K4me3) polyclonal antibody (Cat # PAB0650).

HeLa cells were stained with antibody directed against modified histone and with DAPI.

Cells were methanol fixed for 10 minutes and then blocked with 1% BSA containing PBS.

The fixation step stabilises the morphology of the cells and permeabilizes membranes as well.

(A) Cells were immunofluorescently labelled with the Histone H3 (K4me3) polyclonal antibody (Cat # PAB0650) (diluted 1 : 200 and incubated for 1 hour at room temperature) followed by goat anti-rabbit antibody conjugated to FITC.

(B) Nuclei were DAPI stained to label specifically the DNA.

In both cases, the nuclei are clearly stained.

- Enzyme-linked Immunoabsorbent Assay

ELISA is a quantitative method used to determine the concentration of a primary antibody in sera by using a series of dilutions of sera in antigen coated wells. The antigen used in this case is the peptide including the Histone H3 (K4me3) [ trimethylated lysine 4 ]. We plotted the absorbance versus antiserum dilution to estimate the titer of the affinity purified antibody : 1 : 50,000.

- Dot Blot (Peptide)