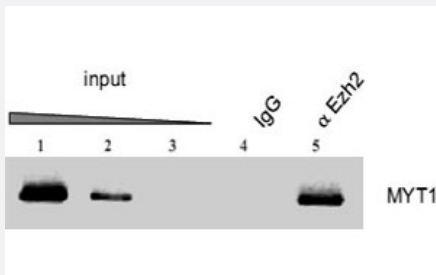


## Ezh2 polyclonal antibody

Catalog # PAB0648

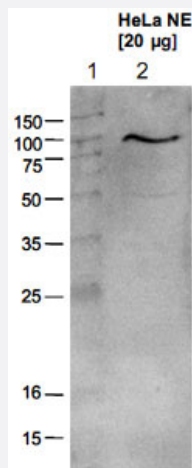
Size 50 ug

### Applications



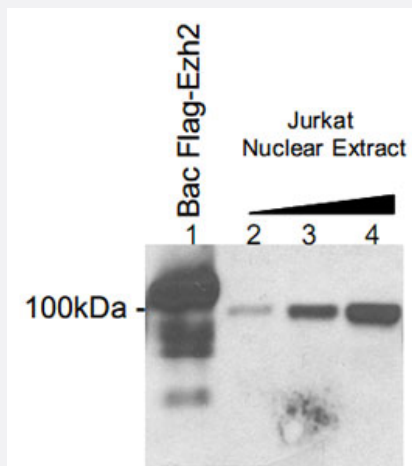
#### ChIP

ChIP results obtained with the Ezh2 polyclonal antibody (Cat # PAB0648). ChIP assays were performed using Jurkat cells.



#### Western Blot (Cell lysate)

Western blot analysis using the Ezh2 polyclonal antibody (Cat # PAB0648). In lane 2, HeLa nuclear extract (HeLa NE) was analysed by Western blot using the Ezh2 polyclonal antibody (Cat # PAB0648) at a dilution of 1 : 1000 in TBS-Tween + 5% skimmed milk. In lane 1, a molecular weight marker is shown.



#### Western Blot

Western blot analysis using the Ezh2 polyclonal antibody (Cat # PAB0648). Extract of insect cells expressing recombinant Flag-Ezh2 (BacFlag-Ezh2) (lane 1) and increasing amounts of Jurkat nuclear extract (lanes 2-4) were analysed by Western blot using the antibody directed against Ezh2 at dilution 1 : 2000. Size and location of the protein are indicated.

## Specification

<b>Product Description</b>	Rabbit polyclonal antibody raised against partial recombinant Ezh2.
<b>Immunogen</b>	Recombinant protein corresponding to amino acids 1-343 of the mouse EZH2.
<b>Host</b>	Rabbit
<b>Reactivity</b>	Mouse
<b>Form</b>	Liquid
<b>Recommend Usage</b>	The optimal working dilution should be determined by the end user.
<b>Storage Buffer</b>	In PBS (0.05% sodium azide, 0.05% proclin 300)
<b>Storage Instruction</b>	Store at -20°C. For long term storage store at -80°C. Aliquot to avoid repeated freezing and thawing.
<b>Note</b>	This product contains sodium azide: a POISONOUS AND HAZARDOUS SUBSTANCE which should be handled by trained staff only.

## Applications

- ChIP

ChIP results obtained with the Ezh2 polyclonal antibody (Cat # PAB0648). ChIP assays were performed using Jurkat cells.

- Western Blot (Cell lysate)

Western blot analysis using the Ezh2 polyclonal antibody (Cat # PAB0648).

In lane 2, HeLa nuclear extract (HeLa NE) was analysed by Western blot using the Ezh2 polyclonal antibody (Cat # PAB0648) at a dilution of 1 : 1000 in TBS-Tween + 5% skimmed milk. In lane 1, a molecular weight marker is shown.

- Western Blot

Western blot analysis using the Ezh2 polyclonal antibody (Cat # PAB0648).

Extract of insect cells expressing recombinant Flag-Ezh2 (BacFlag-Ezh2) (lane 1) and increasing amounts of Jurkat nuclear extract (lanes 2-4) were analysed by Western blot using the antibody directed against Ezh2 at dilution 1 : 2000. Size and location of the protein are indicated.

## Gene Info — Ezh2

<b>Entrez GeneID</b>	<a href="#">14056</a>
----------------------	-----------------------

<b>Gene Name</b>	Ezh2
------------------	------

Gene Alias	Enx-1, Enx1h, KIAA4065, KMT6, MGC90723, mKIAA4065
Gene Description	enhancer of zeste homolog 2 (Drosophila)
Gene Ontology	<a href="#">Hyperlink</a>
Other Designations	OTTMUSP00000023406 enhancer of zeste homolog 2

## Publication Reference

- [The primary microRNA-208b interacts with Polycomb-group protein, Ezh2, to regulate gene expression in the heart.](#)

Mathiyalagan P, Okabe J, Chang L, Su Y, Du XJ, El-Osta A.

Nucleic Acids Research 2014 Jan; 42(2):790.

Application: ChIP, RNA-ChIP, Mouse, Heart

- [Inaugural Article: Distinct histone modifications in stem cell lines and tissue lineages from the early mouse embryo.](#)

Rugg-Gunn PJ, Cox BJ, Ralston A, Rossant J.

Proceedings of the National Academy of Sciences of the United States of America 2010 Jun; 107(24):10783.

Application: WB, Mouse, ES, TS, XEN cells

- [Composition and histone substrates of polycomb repressive group complexes change during cellular differentiation.](#)

Kuzmichev A, Margueron R, Vaquero A, Preissner TS, Scher M, Kirmizis A, Ouyang X, Brockdorff N, Abate-Shen C, Farnham P, Reinberg D.

PNAS 2005 Jan; 102(6):1859.

- [EZH2 is a marker of aggressive breast cancer and promotes neoplastic transformation of breast epithelial cells.](#)

Kleer CG, Cao Q, Varambally S, Shen R, Ota I, Tomlins SA, Ghosh D, Sewalt RG, Otte AP, Hayes DF, Sabel MS, Livant D, Weiss SJ, Rubin MA, Chinnaiyan AM.

PNAS 2003 Sep; 100(20):11606.

- [Murine Polycomb- and trithorax-group genes regulate homeotic pathways and beyond.](#)

A Schumacher, T Magnuson.

Trends in Genetics 1997 May; 13(5):167.