

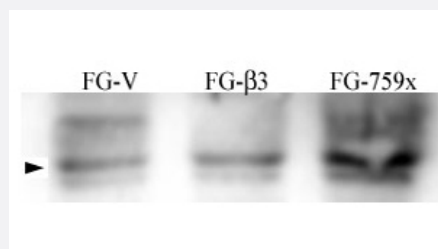
# SRC (phospho Y215) polyclonal antibody

Catalog # PAB0612

Size 400 uL

## Applications

### Western Blot (Cell lysate)



FG Pancreatic Carcinoma Cell stably expressing vector along (FG-V) the b3 integrin subunit (FG-b3) or a b3 truncation mutant (FG-759x). SRC (phospho Y215) polyclonal antibody (Cat # PAB0612) was diluted in 1% BSA/TBST and incubated Overnight at 4 °C. After washing 3x 5 min. with TBST the blots were incubated with Goat anti-mouse or Goat anti-rabbit secondary antibody for 1 hr at room temperature. The blots were again washed 3x 5 min. with TBST and developed using ECL reagent.

Data and protocol kindly provided by Dr. Weis of Cheresch Lab, UCSD

## Specification

<b>Product Description</b>	Rabbit polyclonal antibody raised against synthetic phosphopeptide of SRC.
<b>Immunogen</b>	Synthetic phosphopeptide (conjugated with KLH) corresponding to residues surrounding Y215 of human SRC.
<b>Host</b>	Rabbit
<b>Reactivity</b>	Human
<b>Form</b>	Liquid
<b>Purification</b>	Protein G purification
<b>Recommend Usage</b>	Western Blot (1:1000) The optimal working dilution should be determined by the end user.
<b>Storage Buffer</b>	In PBS (0.09% sodium azide)

**Storage Instruction**

Store at 4°C. For long term storage store at -20°C.  
Aliquot to avoid repeated freezing and thawing.

**Note**

This product contains sodium azide: a POISONOUS AND HAZARDOUS SUBSTANCE which should be handled by trained staff only.

## Applications

- Western Blot (Cell lysate)

FG Pancreatic Carcinoma Cell stably expressing vector along (FG-V) the b3 integrin subunit (FG-b3) or a b3 truncation mutant (FG-759x).

SRC (phospho Y215) polyclonal antibody (Cat # PAB0612) was diluted in 1% BSA/TBST and incubated Overnight at 4 °C.

After washing 3x 5 min. with TBST the blots were incubated with Goat anti-mouse or Goat anti-rabbit secondary antibody for 1 hr at room temperature.

The blots were again washed 3x 5 min. with TBST and developed using ECL reagent.

Data and protocol kindly provided by Dr. Weis of Cheresch Lab, UCSD

## Gene Info — SRC

**Entrez GeneID**[6714](#)**Protein Accession#**[NP\\_005408;P12931](#)**Gene Name**

SRC

**Gene Alias**

ASV, SRC1, c-SRC, p60-Src

**Gene Description**

v-src sarcoma (Schmidt-Ruppin A-2) viral oncogene homolog (avian)

**Omim ID**[190090](#)**Gene Ontology**[Hyperlink](#)**Gene Summary**

This gene is highly similar to the v-src gene of Rous sarcoma virus. This proto-oncogene may play a role in the regulation of embryonic development and cell growth. The protein encoded by this gene is a tyrosine-protein kinase whose activity can be inhibited by phosphorylation by c-SRC kinase. Mutations in this gene could be involved in the malignant progression of colon cancer. Two transcript variants encoding the same protein have been found for this gene. [provided by RefSeq]

**Other Designations**

OTTHUMP00000174476|OTTHUMP00000174477|proto-oncogene tyrosine-protein kinase SRC|protooncogene SRC, Rous sarcoma|tyrosine kinase pp60c-src|tyrosine-protein kinase SRC-1

## Publication Reference

- [Autocrine CSF-1R activation promotes Src-dependent disruption of mammary epithelial architecture.](#)

Wrobel CN, Debnath J, Lin E, Beausoleil S, Roussel MF, Brugge JS.

Journal of Cellular Biology 2004 Apr; 165(2):263.

- [Tyrosine 981, a novel ret autophosphorylation site, binds c-Src to mediate neuronal survival.](#)

Encinas M, Crowder RJ, Milbrandt J, Johnson EM Jr.

The Journal of Biological Chemistry 2004 Apr; 279(18):18262.

- [Activation of beta-catenin-TCF-mediated transcription by non-receptor tyrosine kinase v-Src.](#)

Haraguchi K, Nishida A, Ishidate T, Akiyama T.

Biochemical and Biophysical Research Communications 2004 Jan; 313(4):841.

## Pathway

- [Adherens junction](#)
- [Endocytosis](#)
- [Epithelial cell signaling in Helicobacter pylori infection](#)
- [ErbB signaling pathway](#)
- [Focal adhesion](#)
- [Gap junction](#)
- [GnRH signaling pathway](#)
- [Tight junction](#)
- [VEGF signaling pathway](#)

## Disease

- [Genetic Predisposition to Disease](#)
- [HIV Infections](#)

- [Thyroid Neoplasms](#)