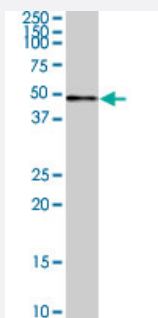


CDC6 (phospho S54) polyclonal antibody

Catalog # PAB0435

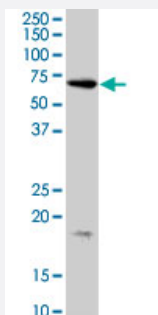
Size 400 uL

Applications



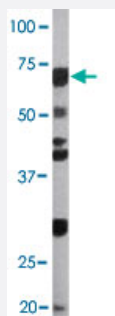
Western Blot (Tissue lysate)

CDC6 (phospho S54) polyclonal antibody (Cat # PAB0435). Western blot analysis of CDC6 expression in human colon.



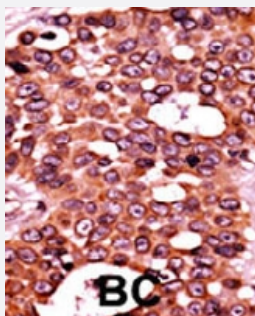
Western Blot (Cell lysate)

CDC6 (phospho S54) polyclonal antibody (Cat # PAB0435). Western blot analysis of CDC6 expression in HeLa.



Western Blot (Cell lysate)

The CDC6 (phospho S54) polyclonal antibody (Cat # PAB0435) is used in Western blot to detect Phospho-CDC6-S54 in Ramos cell lysate



Immunohistochemistry (Formalin/PFA-fixed paraffin-embedded sections)

Formalin-fixed and paraffin-embedded human cancer tissue reacted with CDC6 (phospho S54) polyclonal antibody (Cat # PAB0435) which was peroxidase-conjugated to the secondary antibody followed by AEC staining. This data demonstrates the use of this antibody for immunohistochemistry; clinical relevance has not been evaluated. BC = breast carcinoma.

Specification

Product Description	Rabbit polyclonal antibody raised against synthetic phosphopeptide of CDC6.
Immunogen	Synthetic phosphopeptide (conjugated with KLH) corresponding to residues surrounding S54 of human CDC6.
Host	Rabbit
Reactivity	Human
Form	Liquid
Purification	Protein G purification
Recommend Usage	Western Blot (1:1000) Immunohistochemistry (1:50-100) The optimal working dilution should be determined by the end user.
Storage Buffer	In PBS (0.09% sodium azide)
Storage Instruction	Store at 4°C. For long term storage store at -20°C. Aliquot to avoid repeated freezing and thawing.
Note	This product contains sodium azide: a POISONOUS AND HAZARDOUS SUBSTANCE which should be handled by trained staff only.

Applications

- Western Blot (Tissue lysate)

CDC6 (phospho S54) polyclonal antibody (Cat # PAB0435). Western blot analysis of CDC6 expression in human colon.

[Protocol Download](#)

- Western Blot (Cell lysate)

CDC6 (phospho S54) polyclonal antibody (Cat # PAB0435). Western blot analysis of CDC6 expression in HeLa.

[Protocol Download](#)

- Western Blot (Cell lysate)

The CDC6 (phospho S54) polyclonal antibody (Cat # PAB0435) is used in Western blot to detect Phospho-CDC6-S54 in Ramos cell lysate

- Immunohistochemistry (Formalin/PFA-fixed paraffin-embedded sections)

Formalin-fixed and paraffin-embedded human cancer tissue reacted with CDC6 (phospho S54) polyclonal antibody (Cat # PAB0435) which was peroxidase-conjugated to the secondary antibody followed by AEC staining. This data demonstrates the use of this antibody for immunohistochemistry; clinical relevance has not been evaluated. BC = breast carcinoma.

Gene Info — CDC6

Entrez GeneID [990](#)

Protein Accession# [NP_001245:Q99741](#)

Gene Name CDC6

Gene Alias CDC18L, HsCDC18, HsCDC6

Gene Description cell division cycle 6 homolog (S. cerevisiae)

Omim ID [602627](#)

Gene Ontology [Hyperlink](#)

Gene Summary The protein encoded by this gene is highly similar to Saccharomyces cerevisiae Cdc6, a protein essential for the initiation of DNA replication. This protein functions as a regulator at the early step of DNA replication. It localizes in cell nucleus during cell cycle G1, but translocates to the cytoplasm at the start of S phase. The subcellular translocation of this protein during cell cycle is regulated through its phosphorylation by Cdks. Transcription of this protein was reported to be regulated in response to mitogenic signals through transcriptional control mechanism involving E2F proteins. [provided by RefSeq]

Other Designations CDC18 (cell division cycle 18, S.pombe, homolog)-like|CDC6 cell division cycle 6 homolog|CDC6-related protein|cell division cycle 6 protein

Publication Reference

- [Cdc6 chromatin affinity is unaffected by serine-54 phosphorylation, S-phase progression, and overexpression of cyclin A.](#)

Alexandrow MG, Hamlin JL.

Molecular and Cellular Biology 2004 Feb; 24(4):1614.

Application: WB-Ce, WB-Tr, Mouse, CHO cells

- [Caspase-3-mediated cleavage of Cdc6 induces nuclear localization of p49-truncated Cdc6 and apoptosis.](#)

Yim H, Jin YH, Park BD, Choi HJ, Lee SK.

Molecular Biology of the Cell 2003 Oct; 14(10):4250.

- [Human replication protein Cdc6 prevents mitosis through a checkpoint mechanism that implicates Chk1.](#)

Clay-Farrace L, Pelizon C, Santamaria D, Pines J, Laskey RA.

The EMBO Journal 2003 Feb; 22(3):704.

Pathway

- [Cell cycle](#)

Disease

- [Carcinoma](#)
- [Genetic Predisposition to Disease](#)
- [Kidney Failure](#)
- [Liver Neoplasms](#)
- [Lymphoma](#)
- [Pulmonary Disease](#)
- [Uterine Cervical Neoplasms](#)