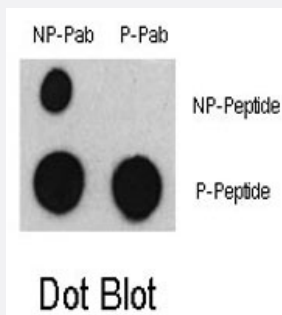


ATF2 (phospho S322) polyclonal antibody

Catalog # PAB0410 Size 400 uL

Applications



Dot Blot (Peptide)

Dot blot analysis of ATF2 (phospho S322) polyclonal antibody (Cat # PAB0410) and ATF2 Non Phospho-specific Pab on nitrocellulose membrane. 50 ng of Phospho-peptide or Non Phospho-peptide per dot were adsorbed.

Specification

Product Description	Rabbit polyclonal antibody raised against synthetic phosphopeptide of ATF2.
Immunogen	Synthetic phosphopeptide (conjugated with KLH) corresponding to residues surrounding S322 of human ATF2.
Host	Rabbit
Reactivity	Human
Form	Liquid
Purification	Protein A purification
Recommend Usage	Dot Blot (1:100-500) The optimal working dilution should be determined by the end user.
Storage Buffer	In PBS (0.09% sodium azide)
Storage Instruction	Store at 4°C. For long term storage store at -20°C. Aliquot to avoid repeated freezing and thawing.
Note	This product contains sodium azide: a POISONOUS AND HAZARDOUS SUBSTANCE which should be handled by trained staff only.

Applications

- Dot Blot (Peptide)

Dot blot analysis of ATF2 (phospho S322) polyclonal antibody (Cat # PAB0410) and ATF2 Non Phospho-specific Pab on nitrocellulose membrane. 50 ng of Phospho-peptide or Non Phospho-peptide per dot were adsorbed.

Gene Info — ATF2

Entrez GeneID [1386](#)

Protein Accession# [NP_001871;P15336](#)

Gene Name ATF2

Gene Alias CRE-BP1, CREB2, HB16, MGC111558, TREB7

Gene Description activating transcription factor 2

Omim ID [123811](#)

Gene Ontology [Hyperlink](#)

Gene Summary This gene encodes a transcription factor that is a member of the leucine zipper family of DNA binding proteins. This protein binds to the cAMP-responsive element (CRE), an octameric palindromic. The protein forms a homodimer or heterodimer with c-Jun and stimulates CRE-dependent transcription. The protein is also a histone acetyltransferase (HAT) that specifically acetylates histones H2B and H4 in vitro; thus it may represent a class of sequence-specific factors that activate transcription by direct effects on chromatin components. Additional transcript variants have been identified but their biological validity has not been determined. [provided by RefSeq]

Other Designations OTTHUMP00000163262|activating transcription factor 2 splice variant ATF2-var2|cAMP responsive element binding protein 2, formerly

Publication Reference

- [Biliverdin reductase, a novel regulator for induction of activating transcription factor-2 and heme oxygenase-1.](#)

Kravets A, Hu Z, Miralem T, Torno MD, Maines MD.

The Journal of Biological Chemistry 2004 Feb; 279(19):19916.

- [Activation and interaction of ATF2 with the coactivator ASC-2 are responsive for granulocytic differentiation by retinoic acid.](#)

Hong S, Choi HM, Park MJ, Kim YH, Choi YH, Kim HH, Choi YH, Cheong J.

The Journal of Biological Chemistry 2004 Jan; 279(17):16996.

- [Induction of CHOP expression by amino acid limitation requires both ATF4 expression and ATF2 phosphorylation.](#)

Averous J, Bruhat A, Jousse C, Carraro V, Thiel G, Fafournoux P.

The Journal of Biological Chemistry 2003 Dec; 279(7):5288.

Pathway

- [MAPK signaling pathway](#)

Disease

- [Bipolar Disorder](#)
- [Cardiovascular Diseases](#)
- [Diabetes Mellitus](#)
- [Edema](#)
- [Genetic Predisposition to Disease](#)
- [Schizophrenia](#)
- [Tobacco Use Disorder](#)