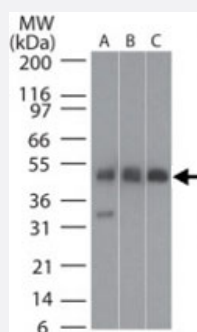


TUBB2A polyclonal antibody

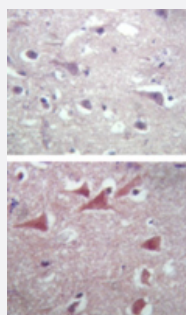
Catalog # PAB0379 Size 100 ug

Applications



Western Blot (Tissue lysate)

Western blot analysis of TUBB2A in A : human brain , B : mouse brain and C : rat brain tissue lysates using TUBB2A polyclonal antibody (Cat # PAB0379) at 0.25 ug/mL .



Immunohistochemistry (Formalin/PFA-fixed paraffin-embedded sections)

Immunohistochemical analysis of TUBB2A in paraffin-embedded formalin-fixed human brain tissue using an isotype control (top) and TUBB2A polyclonal antibody (Cat # PAB0379) (bottom) at 5 ug/mL .

Specification

Product Description	Rabbit polyclonal antibody raised against synthetic peptide of TUBB2A.
Immunogen	A synthetic peptide corresponding to amino acids 417-435 of human TUBB2A.
Sequence	DLVSEYQQYQDATADEQGE
Host	Rabbit
Reactivity	Bovine, Chicken, Clawed frog, Dog, Human, Monkey, Mouse, Rat
Form	Liquid
Recommend Usage	The optimal working dilution should be determined by the end user.

Storage Buffer	In PBS (0.05% BSA, 0.05% sodium azide)
Storage Instruction	Store at 4°C. For long term storage store at -20°C. Aliquot to avoid repeated freezing and thawing.
Note	This product contains sodium azide: a POISONOUS AND HAZARDOUS SUBSTANCE which should be handled by trained staff only.

Applications

- Western Blot (Tissue lysate)

Western blot analysis of TUBB2A in A : human brain , B : mouse brain and C : rat brain tissue lysates using TUBB2A polyclonal antibody (Cat # PAB0379) at 0.25 ug/mL .

- Immunohistochemistry (Formalin/PFA-fixed paraffin-embedded sections)

Immunohistochemical analysis of TUBB2A in paraffin-embedded formalin-fixed human brain tissue using an isotype control (top) and TUBB2A polyclonal antibody (Cat # PAB0379) (bottom) at 5 ug/mL .

Gene Info — TUBB2A

Entrez GeneID	7280
Protein Accession#	AAN85571
Gene Name	TUBB2A
Gene Alias	TUBB, TUBB2, dJ40E16.7
Gene Description	tubulin, beta 2A
Gene Ontology	Hyperlink
Gene Summary	O
Other Designations	OTTHUMP00000015956 tubulin, beta 2 tubulin, beta polypeptide 2

Publication Reference

- [Mitochondria-cytoskeleton interaction: Distribution of \$\gamma\$ -tubulins in cardiomyocytes and HL-1 cells.](#)

Guzun R, Karu-Varikmaa M, Granillo MG, Kuznetsov AV, Michel L, Cottet-Rousselle C, Saaremaa M, Kaambre T, Metsis M, Grimm M, Auffray C, Saks V.

Biochimica et Biophysica Acta 2011 Apr; 1807(4):458.

Application: IF, WB, Rat, Cardiomyocytes, HL-1 cells, Brain, Ventricle

- [Oncostatin M secreted by skin infiltrating T lymphocytes is a potent keratinocyte activator involved in skin inflammation.](#)

Boniface K, Diveu C, Morel F, Pedretti N, Froger J, Ravon E, Garcia M, Venereau E, Preisser L, Guignouard E, Guillet G, Dagregorio G, Pene J, Moles JP, Yssel H, Chevalier S, Bernard FX, Gascan H, Lecron JC.

Journal of Immunology 2007 Apr; 178(7):4615.

Pathway

- [Gap junction](#)
- [Pathogenic Escherichia coli infection - EHEC](#)