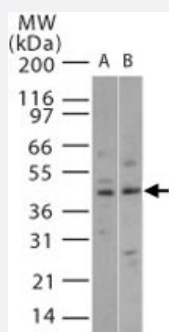


MAPK11 polyclonal antibody

Catalog # PAB0372

Size 100 ug

Applications



Western Blot (Tissue lysate)

Western blot analysis of MAPK11 in 15 ugs of (A) human brain and (B) mouse brain lysate using MAPK11 polyclonal antibody (Cat # PAB0372) at 2 ug/mL .

Specification

Product Description	Rabbit polyclonal antibody raised against synthetic peptide of MAPK11.
Immunogen	A synthetic peptide corresponding to amino acids 39-59 of human MAPK11.
Host	Rabbit
Reactivity	Human, Mouse, Rat
Form	Liquid
Recommend Usage	The optimal working dilution should be determined by the end user.
Storage Buffer	In PBS (0.2% gelatin, 0.05% sodium azide)
Storage Instruction	Store at 4°C. For long term storage store at -20°C. Aliquot to avoid repeated freezing and thawing.
Note	This product contains sodium azide: a POISONOUS AND HAZARDOUS SUBSTANCE which should be handled by trained staff only.

Applications

- Western Blot (Tissue lysate)

Western blot analysis of MAPK11 in 15 ugs of (A) human brain and (B) mouse brain lysate using MAPK11 polyclonal antibody (Cat # PAB0372) at 2 ug/mL .

Gene Info — MAPK11

Entrez GeneID	5600
Protein Accession#	NP_002742
Gene Name	MAPK11
Gene Alias	P38B, P38BETA2, PRKM11, SAPK2, SAPK2B, p38-2, p38Beta
Gene Description	mitogen-activated protein kinase 11
Omim ID	602898
Gene Ontology	Hyperlink
Gene Summary	The protein encoded by this gene is a member of the MAP kinase family. MAP kinases act as an integration point for multiple biochemical signals, and are involved in a wide variety of cellular processes such as proliferation, differentiation, transcription regulation, and development. This kinase is most closely related to p38 MAP kinase, both of which can be activated by proinflammatory cytokines and environmental stress. This kinase is activated through its phosphorylation by MAP kinase kinases (MKKs), preferably by MKK6. Transcription factor ATF2/CREB2 has been shown to be a substrate of this kinase. [provided by RefSeq]
Other Designations	OTTHUMP00000196655 mitogen-activated protein kinase p38 beta mitogen-activated protein kinase p38-2 stress-activated protein kinase-2 stress-activated protein kinase-2b

Pathway

- [Amyotrophic lateral sclerosis \(ALS\)](#)
- [Epithelial cell signaling in Helicobacter pylori infection](#)
- [Fc epsilon RI signaling pathway](#)
- [GnRH signaling pathway](#)
- [Leukocyte transendothelial migration](#)

- [MAPK signaling pathway](#)
- [Neurotrophin signaling pathway](#)
- [T cell receptor signaling pathway](#)
- [Toll-like receptor signaling pathway](#)
- [VEGF signaling pathway](#)

Disease

- [Cardiovascular Diseases](#)
- [Diabetes Mellitus](#)
- [Edema](#)
- [HIV Infections](#)