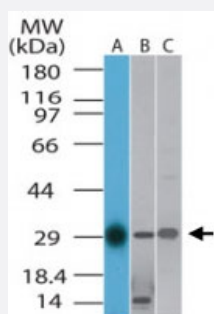


TLX1 polyclonal antibody

Catalog # PAB0355 Size 100 ug

Applications



Western Blot (Tissue lysate)

Western blot analysis of TLX1 in A) human, B) mouse and C) rat liver lysate. Using TLX1 polyclonal antibody (Cat # PAB0355) at 1 ug/mL .

Specification

Product Description	Rabbit polyclonal antibody raised against synthetic peptide of TLX1.
Immunogen	A synthetic peptide corresponding to amino acids 300-330 of human TLX1.
Host	Rabbit
Reactivity	Human, Mouse, Rat
Form	Liquid
Recommend Usage	The optimal working dilution should be determined by the end user.
Storage Buffer	In PBS (0.2% gelatin, 0.05% sodium azide)
Storage Instruction	Store at 4°C. For long term storage store at -20°C. Aliquot to avoid repeated freezing and thawing.
Note	This product contains sodium azide: a POISONOUS AND HAZARDOUS SUBSTANCE which should be handled by trained staff only.

Applications

- Western Blot (Tissue lysate)

Western blot analysis of TLX1 in A) human, B) mouse and C) rat liver lysate. Using TLX1 polyclonal antibody (Cat # PAB0355) at 1 ug/mL .

Gene Info — TLX1

Entrez GeneID	3195
Protein Accession#	NP_005512
Gene Name	TLX1
Gene Alias	HOX11, MGC163402, TCL3
Gene Description	T-cell leukemia homeobox 1
Omim ID	186770
Gene Ontology	Hyperlink
Gene Summary	homologous to Drosophila Notch) OTTHUMP00000020816 T-cell leukemia
Other Designations	Homeo box-11 (T-cell leukemia-3 associated breakpoint, homologous to Drosophila Notch) OTT HUMP00000020816 T-cell leukemia, homeobox 1 homeo box 11 (T-cell lymphoma 3-associated breakpoint)