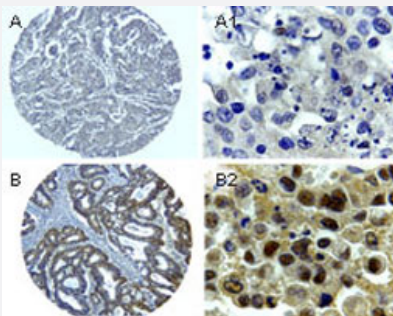


Bag1 polyclonal antibody

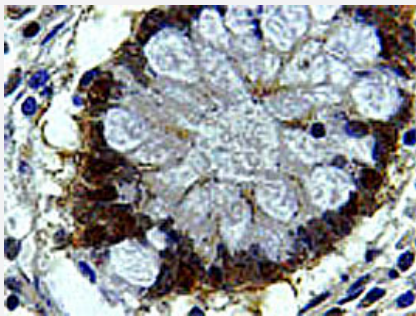
Catalog # PAB0328 Size 50 uL

Applications



Immunohistochemistry (Formalin/PFA-fixed paraffin-embedded sections)

Formalin-fixed, paraffin-embedded sections of human colorectal cancer stained for Bag1. Using Bag1 polyclonal antibody (Cat # PAB0328) at 1 : 2000. Hematoxylin-eosin counterstain. Samples from two patients (A and B) are shown. A1 and B1 are higher magnifications from A and B, respectively.



Immunohistochemistry (Formalin/PFA-fixed paraffin-embedded sections)

Formalin-fixed, paraffin-embedded section of human colon stained for Bag1. Using Bag1 polyclonal antibody (Cat # PAB0328) at 1 : 2000. Hematoxylin-eosin counterstain.

Specification

Product Description	Rabbit polyclonal antibody raised against synthetic peptide of Bag1.
Immunogen	A synthetic peptide corresponding to amino acids 205-219 of mouse BAG1.
Sequence	QETERLQSTNLALAE
Host	Rabbit
Reactivity	Bovine, Dog, Human, Mouse, Rat
Form	Liquid
Recommend Usage	The optimal working dilution should be determined by the end user.

Storage Buffer	In serum (0.05% sodium azide)
Storage Instruction	Store at -20°C. Aliquot to avoid repeated freezing and thawing.
Note	This product contains sodium azide: a POISONOUS AND HAZARDOUS SUBSTANCE which should be handled by trained staff only.

Applications

- Immunohistochemistry (Formalin/PFA-fixed paraffin-embedded sections)

Formalin-fixed, paraffin-embedded sections of human colorectal cancer stained for Bag1. Using Bag1 polyclonal antibody (Cat # PAB0328) at 1 : 2000. Hematoxylin-eosin counterstain. Samples from two patients (A and B) are shown. A1 and B1 are higher magnifications from A and B, respectively.

- Immunohistochemistry (Formalin/PFA-fixed paraffin-embedded sections)

Formalin-fixed, paraffin-embedded section of human colon stained for Bag1. Using Bag1 polyclonal antibody (Cat # PAB0328) at 1 : 2000. Hematoxylin-eosin counterstain.

- Immunoprecipitation

Gene Info — Bag1

Entrez GeneID	12017
Protein Accession#	AAH03722.1
Gene Name	Bag1
Gene Alias	Rap46
Gene Description	BCL2-associated athanogene 1
Gene Ontology	Hyperlink
Other Designations	BCL2-associated athanogene