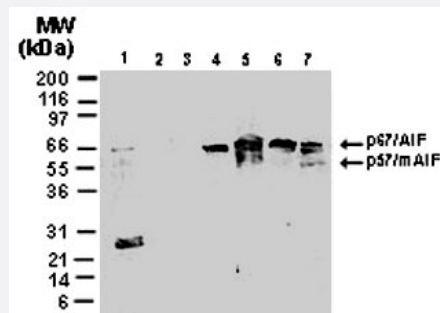


# AIFM1 polyclonal antibody

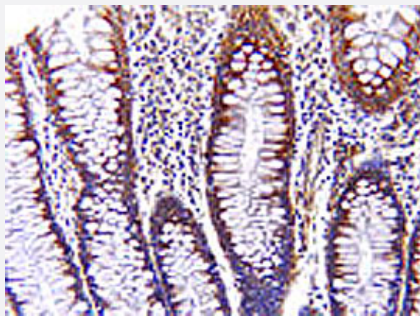
Catalog # PAB0324      Size 50 uL

## Applications



### Western Blot (Tissue lysate)

Western blot analysis of AIFM1 in human colon. Using AIFM1 polyclonal antibody (Cat # PAB0324) at 1 : 2000. Lane 1, normal colon. Lanes 2-7, colon carcinoma tissue lysates from 6 different patients. mAIF, thought to represent mitochondrial AIF.



### Immunohistochemistry (Formalin/PFA-fixed paraffin-embedded sections)

Immunohistochemical staining of AIFM1 in formalin-fixed, paraffin-embedded normal human colon. Using AIFM1 polyclonal antibody (Cat # PAB0324) at 1 : 2000. Hematoxylin-eosin counterstain. In this example, AIFM1 expression is predominant in the upper part of the crypt.

## Specification

Product Description	Rabbit polyclonal antibody raised against synthetic peptide of AIFM1.
Immunogen	A synthetic peptide corresponding to amino acids 151-169 of human AIFM1.
Sequence	RARDPGARVLVSEDPELP
Host	Rabbit
Reactivity	Bovine, Dog, Human, Mouse, Rat
Form	Liquid
Recommend Usage	The optimal working dilution should be determined by the end user.

<b>Storage Buffer</b>	In serum (0.05% sodium azide)
<b>Storage Instruction</b>	Store at -20°C. Aliquot to avoid repeated freezing and thawing.
<b>Note</b>	This product contains sodium azide: a POISONOUS AND HAZARDOUS SUBSTANCE which should be handled by trained staff only.

## Applications

- Western Blot (Tissue lysate)

Western blot analysis of AIFM1 in human colon. Using AIFM1 polyclonal antibody (Cat # PAB0324) at 1 : 2000. Lane 1, normal colon. Lanes 2-7, colon carcinoma tissue lysates from 6 different patients. mAIF, thought to represent mitochondrial AIF.

- Immunohistochemistry (Formalin/PFA-fixed paraffin-embedded sections)

Immunohistochemical staining of AIFM1 in formalin-fixed, paraffin-embedded normal human colon. Using AIFM1 polyclonal antibody (Cat # PAB0324) at 1 : 2000. Hematoxylin-eosin counterstain. In this example, AIFM1 expression is predominant in the upper part of the crypt.

- Immunohistochemistry (Frozen sections)

- Immunoprecipitation

## Gene Info — AIFM1

<b>Entrez GeneID</b>	<a href="#">9131</a>
<b>Protein Accession#</b>	<a href="#">NP_004199.1</a>
<b>Gene Name</b>	AIFM1
<b>Gene Alias</b>	AIF, MGC111425, PDCD8
<b>Gene Description</b>	apoptosis-inducing factor, mitochondrion-associated, 1
<b>Omim ID</b>	<a href="#">300169</a>
<b>Gene Ontology</b>	<a href="#">Hyperlink</a>

**Gene Summary**

This gene encodes a flavoprotein essential for nuclear disassembly in apoptotic cells that is found in the mitochondrial intermembrane space in healthy cells. Induction of apoptosis results in the translocation of this protein to the nucleus where it effects chromosome condensation and fragmentation. In addition, this gene product induces mitochondria to release the apoptogenic proteins cytochrome c and caspase-9. Several alternative transcripts encoding different isoforms have been identified for this gene. [provided by RefSeq]

**Other Designations**

OTTHUMP00000024007|OTTHUMP00000024008|OTTHUMP00000024009|programmed cell death 8|programmed cell death 8 (apoptosis-inducing factor)|striatal apoptosis-inducing factor

## Pathway

- [Apoptosis](#)

## Disease

- [Cardiovascular Diseases](#)
- [Diabetes Mellitus](#)
- [Edema](#)
- [Genetic Predisposition to Disease](#)
- [Prostatic Neoplasms](#)