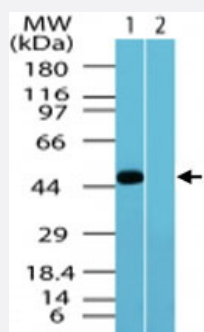


TRHR polyclonal antibody

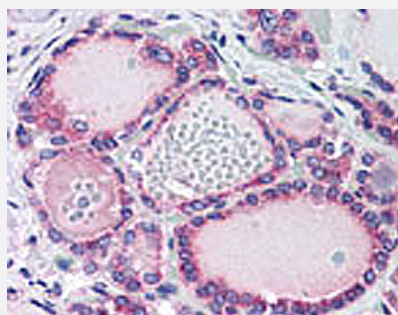
Catalog # PAB0315 Size 100 ug

Applications



Western Blot (Tissue lysate)

Western blot analysis of human TRHR in human brain lysate in the 1) absence and 2) presence of immunizing peptide. Using TRHR polyclonal antibody (Cat # PAB0315) at 0.5 ug/mL .



Immunohistochemistry

IHC analysis of human thyroid using TRHR polyclonal antibody (Cat # PAB0315) at 10 ug/mL .

Specification

Product Description	Rabbit polyclonal antibody raised against partial recombinant TRHR.
Immunogen	Recombinant protein corresponding to amino acids 350-400 of human TRHR.
Host	Rabbit
Reactivity	Chimpanzee, Dog, Human, Monkey
Form	Liquid
Recommend Usage	The optimal working dilution should be determined by the end user.
Storage Buffer	In PBS (0.2% gelatin, 0.05% sodium azide)

Storage Instruction

Store at 4°C. For long term storage store at -20°C.
Aliquot to avoid repeated freezing and thawing.

Note

This product contains sodium azide: a POISONOUS AND HAZARDOUS SUBSTANCE which should be handled by trained staff only.

Applications

- Western Blot (Tissue lysate)

Western blot analysis of human TRHR in human brain lysate in the 1) absence and 2) presence of immunizing peptide. Using TRHR polyclonal antibody (Cat # PAB0315) at 0.5 ug/mL .

- Immunohistochemistry

IHC analysis of human thyroid using TRHR polyclonal antibody (Cat # PAB0315) at 10 ug/mL .

Gene Info — TRHR

Entrez GeneID[7201](#)**Protein Accession#**[NP_003292.1](#)**Gene Name**

TRHR

Gene Alias

MGC141920

Gene Description

thyrotropin-releasing hormone receptor

Omim ID[188545](#)**Gene Ontology**[Hyperlink](#)**Gene Summary**

Thyrotropin-releasing hormone (TRH; MIM 275120), a small neuropeptide, is widely distributed throughout the central and peripheral nervous system as well as in extraneural tissues. The peptide is synthesized in the hypothalamus and transported by the portal vascular system to the anterior pituitary where it acts on thyrotropic and lactotropic cells to promote secretion of TSH and prolactin, respectively. Thyrotropin-releasing hormone receptor is a G protein-coupled receptor that activates the inositol phospholipid-calcium-protein kinase C transduction pathway upon the binding of TRH. The TRHR gene is expressed in the thyrotrope cells of the anterior pituitary.[supplied by OMIM]

Other Designations

-

Pathway

- [Calcium signaling pathway](#)
- [Neuroactive ligand-receptor interaction](#)

Disease

- [Genetic Predisposition to Disease](#)
- [Hypertension](#)
- [Mental Disorders](#)
- [Obesity](#)
- [Thinness](#)