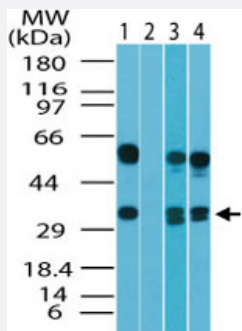


TAAR1 polyclonal antibody

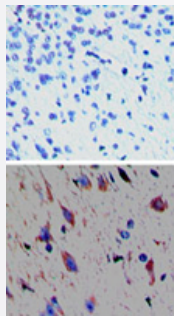
Catalog # PAB0313 Size 100 ug

Applications



Western Blot (Tissue lysate)

Western blot analysis of human TAAR1 in human brain lysate in the 1) absence and 2) presence of immunizing peptide, 3) mouse brain lysate and 4) rat brain lysate. Using TAAR1 polyclonal antibody (Cat # PAB0313) at 2 ug/mL .



Immunohistochemistry (Formalin/PFA-fixed paraffin-embedded sections)

Immunohistochemical analysis of TAAR1 in paraffin-embedded formalin-fixed mouse brain tissue. Using a rabbit isotype control (top) and TAAR1 polyclonal antibody (Cat # PAB0313) (bottom) at 5 ug/mL .

Specification

Product Description	Rabbit polyclonal antibody raised against partial recombinant TAAR1.
Immunogen	Recombinant protein corresponding to amino acids 200-230 of human TAAR1.
Host	Rabbit
Reactivity	Chimpanzee, Human
Form	Liquid
Recommend Usage	The optimal working dilution should be determined by the end user.
Storage Buffer	In PBS (0.05% BSA, 0.05% sodium azide)

Storage Instruction

Store at 4°C. For long term storage store at -20°C.
Aliquot to avoid repeated freezing and thawing.

Note

This product contains sodium azide: a POISONOUS AND HAZARDOUS SUBSTANCE which should be handled by trained staff only.

Applications

- Western Blot (Tissue lysate)

Western blot analysis of human TAAR1 in human brain lysate in the 1) absence and 2) presence of immunizing peptide, 3) mouse brain lysate and 4) rat brain lysate. Using TAAR1 polyclonal antibody (Cat # PAB0313) at 2 ug/mL .

- Immunohistochemistry (Formalin/PFA-fixed paraffin-embedded sections)

Immunohistochemical analysis of TAAR1 in paraffin-embedded formalin-fixed mouse brain tissue. Using a rabbit isotype control (top) and TAAR1 polyclonal antibody (Cat # PAB0313) (bottom) at 5 ug/mL .

Gene Info — TAAR1

Entrez GeneID[134864](#)**Protein Accession#**[NP_612200](#)**Gene Name**

TAAR1

Gene Alias

MGC126874, MGC138399, RP11-295F4.9, TA1, TAR1, TRAR1

Gene Description

trace amine associated receptor 1

Omim ID[609333](#)**Gene Ontology**[Hyperlink](#)**Gene Summary**

TAAR1 is a G protein-coupled receptor activated by trace amines. Trace amines are endogenous amine compounds that account for less than 1% of the biogenic amines in most brain regions (Bunzow et al., 2001 [PubMed 11723224]).[supplied by OMIM]

Other Designations

OTTHUMP00000017224|trace amine receptor 1

Pathway

- [Neuroactive ligand-receptor interaction](#)