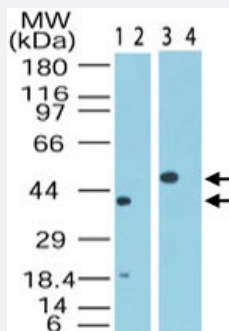


# MAPKAP1 polyclonal antibody

Catalog # PAB0290

Size 100 ug

## Applications



### Western Blot (Tissue lysate)

Western blot analysis of MAPKAP1 in human heart\*\* lysate in the 1) absence and 2) presence of immunizing peptide and in human skeletal muscle\*\* lysate in the 3) absence and 4) presence of immunizing peptide. Using MAPKAP1 polyclonal antibody (Cat # PAB0290) at 0.5 ug/mL. (\*\*There are multiple isoforms of this protein, ranging from approximately 310 amino acids to approximately 522 amino acids. Isoform distribution varies with tissue type.)

## Specification

<b>Product Description</b>	Rabbit polyclonal antibody raised against partial recombinant MAPKAP1.
<b>Immunogen</b>	Recombinant protein corresponding to amino acids 85-102 of human MAPKAP1.
<b>Sequence</b>	NTAQRLERLRKERQNIK
<b>Host</b>	Rabbit
<b>Reactivity</b>	Birds, Bovine, Chicken, Dog, Human, Mouse, Rat, Zebra fish
<b>Form</b>	Liquid
<b>Recommend Usage</b>	The optimal working dilution should be determined by the end user.
<b>Storage Buffer</b>	In PBS (0.2% gelatin, 0.05% sodium azide)
<b>Storage Instruction</b>	Store at 4°C. For long term storage store at -20°C. Aliquot to avoid repeated freezing and thawing.
<b>Note</b>	This product contains sodium azide: a POISONOUS AND HAZARDOUS SUBSTANCE which should be handled by trained staff only.

## Applications

- Western Blot (Tissue lysate)

Western blot analysis of MAPKAP1 in human heart\*\* lysate in the 1) absence and 2) presence of immunizing peptide and in human skeletal muscle\*\* lysate in the 3) absence and 4) presence of immunizing peptide. Using MAPKAP1 polyclonal antibody (Cat # PAB0290) at 0.5 ug/mL. (\*\*There are multiple isoforms of this protein, ranging from approximately 310 amino acids to approximately 522 amino acids. Isoform distribution varies with tissue type.)

## Gene Info — MAPKAP1

Entrez GeneID	<a href="#">79109</a>
Gene Name	MAPKAP1
Gene Alias	JC310, MGC2745, MIP1, SIN1, SIN1b, SIN1g
Gene Description	mitogen-activated protein kinase associated protein 1
Omim ID	<a href="#">610558</a>
Gene Ontology	<a href="#">Hyperlink</a>
Gene Summary	This gene encodes a protein that is highly similar to the yeast SIN1 protein, a stress-activated protein kinase. Alternatively spliced transcript variants encoding distinct isoforms have been described. Alternate polyadenylation sites as well as alternate 3' UTRs have been identified for transcripts of this gene. [provided by RefSeq]
Other Designations	MEKK2-interacting protein 1 OTTHUMP00000022139 OTTHUMP00000022140 OTTHUMP00000022141 OTTHUMP00000064207 SAPK-interacting protein 1 ras inhibitor MGC2745 stress-activated map kinase interacting protein 1 stress-activated protein kinase-interacting 1

## Disease

- [Cardiovascular Diseases](#)
- [Cerebral Hemorrhage](#)
- [Cleft Lip](#)
- [Cleft Palate](#)
- [Diabetes Mellitus](#)
- [Edema](#)
- [Genetic Predisposition to Disease](#)

- [Hypertension](#)
- [Intracranial Hemorrhages](#)
- [Stroke](#)
- [Subarachnoid Hemorrhage](#)
- [Tobacco Use Disorder](#)