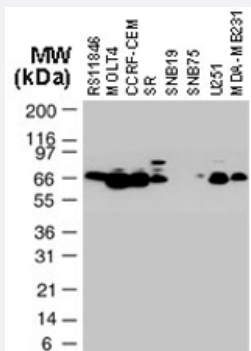


TRAF3 polyclonal antibody

Catalog # PAB0276 Size 50 uL

Applications



Western Blot (Cell lysate)

Western blot analysis of TRAF3 in various tumor cell lines. Using TRAF3 polyclonal antibody (Cat # PAB0276) at 1 : 2000. TRAF3 is observed at ~67 kDa.

Specification

Product Description	Rabbit polyclonal antibody raised against partial recombinant TRAF3.
Immunogen	Recombinant protein corresponding to amino acids 341-568 of human TRAF3.
Host	Rabbit
Reactivity	Gerbils, Human, Mouse, Rat
Form	Liquid
Recommend Usage	The optimal working dilution should be determined by the end user.
Storage Buffer	In serum (0.05% sodium azide)
Storage Instruction	Store at -20°C. Aliquot to avoid repeated freezing and thawing.
Note	This product contains sodium azide: a POISONOUS AND HAZARDOUS SUBSTANCE which should be handled by trained staff only.

Applications

- Western Blot (Cell lysate)

Western blot analysis of TRAF3 in various tumor cell lines. Using TRAF3 polyclonal antibody (Cat # PAB0276) at 1 : 2000. TRAF3 is observed at ~67 kDa.

- Immunohistochemistry (Formalin/PFA-fixed paraffin-embedded sections)

- Immunohistochemistry (Frozen sections)

- Immunoprecipitation

Gene Info — TRAF3

Entrez GeneID [7187](#)

Gene Name TRAF3

Gene Alias CAP-1, CD40bp, CRAF1, LAP1

Gene Description TNF receptor-associated factor 3

Omim ID [601896](#)

Gene Ontology [Hyperlink](#)

Gene Summary The protein encoded by this gene is a member of the TNF receptor associated factor (TRAF) protein family. TRAF proteins associate with, and mediate the signal transduction from, members of the TNF receptor (TNFR) superfamily. This protein participates in the signal transduction of CD40, a TNFR family member important for the activation of the immune response. This protein is found to be a critical component of the lymphotoxin-beta receptor (LTbetaR) signaling complex, which induces NF-kappaB activation and cell death initiated by LTbeta ligation. Epstein-Barr virus encoded latent infection membrane protein-1 (LMP1) can interact with this and several other members of the TRAF family, which may be essential for the oncogenic effects of LMP1. Three alternatively spliced transcript variants encoding two distinct isoforms have been reported. [provided by RefSeq]

Other Designations CD40 associated protein 1|CD40 binding protein|CD40 receptor associated factor 1|LMP1 associated protein

Publication Reference

- [TNFR-associated factor family protein expression in normal tissues and lymphoid malignancies.](#)

Zapata JM, Krajewska M, Krajewski S, Kitada S, Welsh K, Monks A, McCloskey N, Gordon J, Kipps TJ, Gascoyne RD, Shabaik A, Reed JC.

Journal of Immunology 2000 Nov; 165(9):5084.

Pathway

- [Pathways in cancer](#)
- [Small cell lung cancer](#)
- [Toll-like receptor signaling pathway](#)

Disease

- [Alzheimer disease](#)
- [Cardiovascular Diseases](#)
- [Diabetes Complications](#)
- [Diabetes Mellitus](#)
- [Edema](#)
- [Genetic Predisposition to Disease](#)
- [HIV Infections](#)
- [Metabolic Syndrome X](#)
- [Neoplasms](#)
- [Osteoporosis](#)