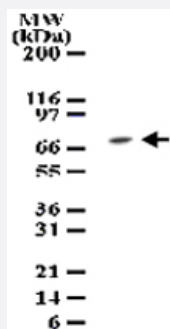


MAP3K7 polyclonal antibody

Catalog # PAB0196

Size 100 ug

Applications



Western Blot (Cell lysate)

Western blot analysis of MAP3K7 in cell lysates from NIH/3T3 cells using MAP3K7 polyclonal antibody (Cat # PAB0196) at 1 ug/mL dilution.

Specification

Product Description	Rabbit polyclonal antibody raised against synthetic peptide of MAP3K7.
Immunogen	A mixture of synthetic peptides corresponding to amino acids 19-35 and 564-579 of human MAP3K7.
Host	Rabbit
Reactivity	Human, Mouse
Form	Liquid
Recommend Usage	The optimal working dilution should be determined by the end user.
Storage Buffer	In PBS (0.05% BSA, 0.05% sodium azide)
Storage Instruction	Store at 4°C. For long term storage store at -20°C. Aliquot to avoid repeated freezing and thawing.
Note	This product contains sodium azide: a POISONOUS AND HAZARDOUS SUBSTANCE which should be handled by trained staff only.

Applications

- Western Blot (Cell lysate)

Western blot analysis of MAP3K7 in cell lysates from NIH/3T3 cells using MAP3K7 polyclonal antibody (Cat # PAB0196) at 1 ug/mL dilution.

Gene Info — MAP3K7

Entrez GeneID	6885
Gene Name	MAP3K7
Gene Alias	TAK1, TGF1a
Gene Description	mitogen-activated protein kinase kinase kinase 7
Omim ID	602614
Gene Ontology	Hyperlink
Gene Summary	The protein encoded by this gene is a member of the serine/threonine protein kinase family. This kinase mediates the signaling transduction induced by TGF beta and morphogenetic protein (BMP), and controls a variety of cell functions including transcription regulation and apoptosis. In response to IL-1, this protein forms a kinase complex including TRAF6, MAP3K7P1/TAB1 and MAP3K7P2/TAB2; this complex is required for the activation of nuclear factor kappa B. This kinase can also activate MAPK8/JNK, MAP2K4/MKK4, and thus plays a role in the cell response to environmental stresses. Four alternatively spliced transcript variants encoding distinct isoforms have been reported. [provided by RefSeq]
Other Designations	OTTHUMP00000016870 OTTHUMP00000016871 OTTHUMP00000016872 OTTHUMP00000016873 TGF-beta activated kinase 1 transforming growth factor-beta-activated kinase 1

Pathway

- [Adherens junction](#)
- [MAPK signaling pathway](#)
- [T cell receptor signaling pathway](#)
- [Toll-like receptor signaling pathway](#)
- [Wnt signaling pathway](#)

Disease

- [Arthritis](#)
- [Crohn Disease](#)
- [Genetic Predisposition to Disease](#)
- [Inflammatory Bowel Diseases](#)
- [Narcolepsy](#)
- [Tobacco Use Disorder](#)