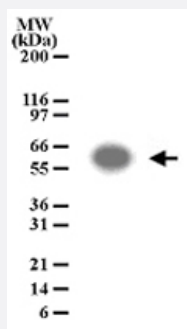


ATF2 polyclonal antibody

Catalog # PAB0173 Size 100 ug

Applications



Western Blot (Cell lysate)

Detection of ATF2 in 293 cell lysate using ATF2 polyclonal antibody (Cat # PAB0173) at 2 ug/mL .

Specification

Product Description	Rabbit polyclonal antibody raised against synthetic peptide of ATF2.
Immunogen	A synthetic peptide corresponding to amino acids 13-27 of human ATF2.
Host	Rabbit
Reactivity	Human
Form	Liquid
Recommend Usage	The optimal working dilution should be determined by the end user.
Storage Buffer	In PBS (0.02% sodium azide)
Storage Instruction	Store at 4°C. For long term storage store at -20°C. Aliquot to avoid repeated freezing and thawing.
Note	This product contains sodium azide: a POISONOUS AND HAZARDOUS SUBSTANCE which should be handled by trained staff only.

Applications

- Western Blot (Cell lysate)

Detection of ATF2 in 293 cell lysate using ATF2 polyclonal antibody (Cat # PAB0173) at 2 ug/mL .

Gene Info — ATF2

Entrez GeneID	1386
Gene Name	ATF2
Gene Alias	CRE-BP1, CREB2, HB16, MGC111558, TREB7
Gene Description	activating transcription factor 2
Omim ID	123811
Gene Ontology	Hyperlink
Gene Summary	<p>This gene encodes a transcription factor that is a member of the leucine zipper family of DNA binding proteins. This protein binds to the cAMP-responsive element (CRE), an octameric palindrome. The protein forms a homodimer or heterodimer with c-Jun and stimulates CRE-dependent transcription. The protein is also a histone acetyltransferase (HAT) that specifically acetylates histones H2B and H4 in vitro; thus it may represent a class of sequence-specific factors that activate transcription by direct effects on chromatin components. Additional transcript variants have been identified but their biological validity has not been determined. [provided by RefSeq]</p>
Other Designations	OTTHUMP00000163262 activating transcription factor 2 splice variant ATF2-var2 cAMP responsive element binding protein 2, formerly

Pathway

- [MAPK signaling pathway](#)

Disease

- [Bipolar Disorder](#)
- [Cardiovascular Diseases](#)
- [Diabetes Mellitus](#)

- [Edema](#)
- [Genetic Predisposition to Disease](#)
- [Schizophrenia](#)
- [Tobacco Use Disorder](#)