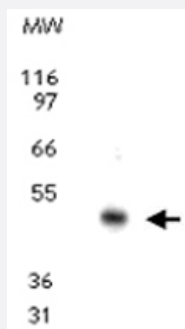


CCR10 polyclonal antibody

Catalog # PAB0165

Size 100 ug

Applications



Western Blot (Cell lysate)

Western blot analysis for CCR10. Using CCR10 polyclonal antibody (Cat # PAB0165) at 2 ug/mL dilution against 10 ug of MCF-7 (a human breast cancer cell line) cell lysate.

Specification

Product Description	Rabbit polyclonal antibody raised against synthetic peptide of CCR10.
Immunogen	A synthetic peptide corresponding to amino acids 350-362 of human CCR10.
Host	Rabbit
Reactivity	Human
Form	Liquid
Recommend Usage	The optimal working dilution should be determined by the end user.
Storage Buffer	In PBS (0.05% BSA, 0.05% sodium azide)
Storage Instruction	Store at 4°C. For long term storage store at -20°C. Aliquot to avoid repeated freezing and thawing.
Note	This product contains sodium azide: a POISONOUS AND HAZARDOUS SUBSTANCE which should be handled by trained staff only.

Applications

- Western Blot (Cell lysate)

Western blot analysis for CCR10. Using CCR10 polyclonal antibody (Cat # PAB0165) at 2 ug/mL dilution against 10 ug of MCF-7 (a human breast cancer cell line) cell lysate.

- Immunohistochemistry (Frozen sections)

- Flow Cytometry

Gene Info — CCR10

Entrez GeneID	2826
---------------	----------------------

Gene Name	CCR10
-----------	-------

Gene Alias	GPR2
------------	------

Gene Description	chemokine (C-C motif) receptor 10
------------------	-----------------------------------

Omim ID	600240
---------	------------------------

Gene Ontology	Hyperlink
---------------	---------------------------

Gene Summary	<p>Chemokines are a group of small (approximately 8 to 14 kD), mostly basic, structurally related molecules that regulate cell trafficking of various types of leukocytes through interactions with a subset of 7-transmembrane, G protein-coupled receptors. Chemokines also play fundamental roles in the development, homeostasis, and function of the immune system, and they have effects on cells of the central nervous system as well as on endothelial cells involved in angiogenesis or angiostasis. Chemokines are divided into 2 major subfamilies, CXC and CC, based on the arrangement of the first 2 of the 4 conserved cysteine residues; the 2 cysteines are separated by a single amino acid in CXC chemokines and are adjacent in CC chemokines. CCR10 is the receptor for CCL27 (SCYA27; MIM 604833); CCR10-CCL27 interactions are involved in T cell-mediated skin inflammation (Homey et al., 2002 [PubMed 11821900]).[supplied by OMIM]</p>
--------------	--

Other Designations	CC chemokine receptor 10 G protein-coupled receptor 2
--------------------	---

Publication Reference

- [In vitro and in vivo studies on CCR10 regulation by Annexin A1.](#)

Rodrigues-Lisoni FC, Mehet DK, Peitl P Jr, John CD, da Silva Junior WA, Tajara E, Buckingham JC, Solito E.
FEBS Letters 2006 Jan; 580(5):1431.

- [Monocyte chemotactic protein-1 is a potential player in the negative cross-talk between adipose tissue and skeletal muscle.](#)

Sell H, Dietze-Schroeder D, Kaiser U, Eckel J.
Endocrinology 2006 Jan; 147(5):2458.

- [Identification of anti-inflammatory drugs according to their capacity to suppress type-1 and type-2 T cell profiles.](#)

Moed H, Stoof TJ, Boorsma DM, von Blomberg BM, Gibbs S, Bruynzeel DP, Scheper RJ, Rustemeyer T.
Clinical and Experimental Allergy : Journal of the British Society for Allergy and Clinical Immunology 2004 Dec; 34(12):1868.

- [Increased CCL27-CCR10 expression in allergic contact dermatitis: implications for local skin memory.](#)

Moed H, Boorsma DM, Tensen CP, Flier J, Jonker MJ, Stoof TJ, von Blomberg BM, Bruynzeel DP, Scheper RJ, Rustemeyer T, Gibbs S.
The Journal of Pathology 2004 Aug; 204(1):39.

- [Nickel-responding T cells are CD4+ CLA+ CD45RO+ and express chemokine receptors CXCR3, CCR4 and CCR10.](#)

Moed H, Boorsma DM, Stoof TJ, von Blomberg BM, Bruynzeel DP, Scheper RJ, Gibbs S, Rustemeyer T.
The British Journal of Dermatology 2004 Jun; 151(1):32.

- [Expression of the T-helper 2-specific chemokine receptor CCR4 on CCR10-positive lymphocytes in atopic dermatitis skin but not in psoriasis skin.](#)

C Vestergaard, M Deleuran, B Gesser, C Gronhoj Larsen.
The British Journal of Dermatology 2003 Sep; 149(3):457.

Application: IHC-Fr, Human, Human skin biopsies

Pathway

- [Chemokine signaling pathway](#)
- [Cytokine-cytokine receptor interaction](#)