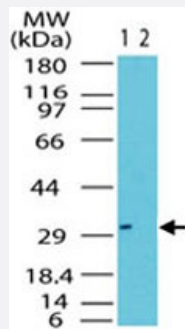


RAX polyclonal antibody

Catalog # PAB0149

Size 100 ug

Applications



Western Blot (Cell lysate)

Western blot analysis of RAX in the 1) absence and 2) presence of immunizing peptide in Jurkat cell lysate. Using RAX polyclonal antibody (Cat # PAB0149) at 0.5 ug/mL .

Specification

Product Description	Rabbit polyclonal antibody raised against partial recombinant RAX.
Immunogen	Recombinant protein corresponding to amino acids 300-350 of human RAX.
Host	Rabbit
Reactivity	Dog, Human, Monkey
Form	Liquid
Recommend Usage	The optimal working dilution should be determined by the end user.
Storage Buffer	In PBS (0.05% BSA, 0.05% sodium azide)
Storage Instruction	Store at 4°C. For long term storage store at -20°C. Aliquot to avoid repeated freezing and thawing.
Note	This product contains sodium azide: a POISONOUS AND HAZARDOUS SUBSTANCE which should be handled by trained staff only.

Applications

- Western Blot (Cell lysate)

Western blot analysis of RAX in the 1) absence and 2) presence of immunizing peptide in Jurkat cell lysate. Using RAX polyclonal antibody (Cat # PAB0149) at 0.5 ug/mL .

Gene Info — RAX

Entrez GeneID	30062
Gene Name	RAX
Gene Alias	MCOP3, RX
Gene Description	retina and anterior neural fold homeobox
Omim ID	601881
Gene Ontology	Hyperlink
Gene Summary	Development of the vertebrate eye requires a series of steps including specification of the anterior neural plate, evagination of the optic vesicles from the ventral forebrain, and the cellular differentiation of the lens and retina. Homeobox-containing genes, including RAX, play a critical role in vertebrate and invertebrate eye formation (Mathers et al., 1997 [PubMed 9177348]).[supplied by OMM]
Other Designations	retinal homeobox protein

Disease

- [Anophthalmos](#)
- [Coloboma](#)
- [Genetic Predisposition to Disease](#)
- [Microphthalmos](#)