

Bioactive

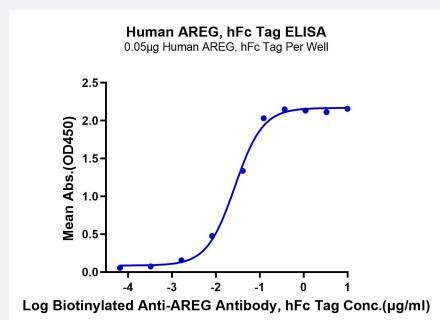
HuPro®

AREG (Human) Recombinant Protein

Catalog # P9935

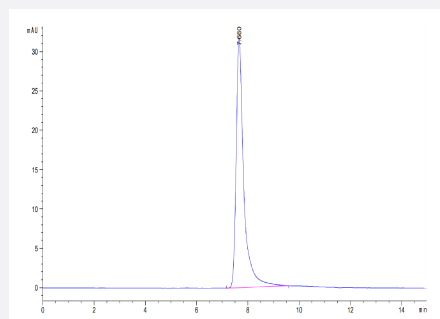
Size 100 ug

Applications



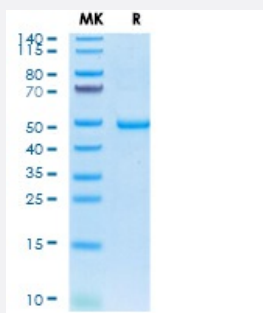
Enzyme-linked Immunoabsorbent Assay

Immobilized Human AREG, hFc Tag at 0.5 ug/mL (100 uL/Well) on the plate. Dose response curve for Biotinylated Anti-AREG Antibody, hFc Tag with the EC50 of 27.2 ng/mL determined by ELISA.



SEC-HPLC

The purity of Human-AREG is greater than 95% as determined by SEC-HPLC.



Tris-Bis PAGE

Human-AREG on Tris-Bis PAGE under reduced condition. The purity is greater than 95%.

Specification

Product Description

Human AREG (P15514, Ser101-Lys187) partial recombinant protein with hFc tag at N-Terminus expressed in HEK293 cells.

Sequence	Ser101-Lys187
Host	Human
Theoretical MW (kDa)	37.3
Form	Lyophilized
Preparation Method	Mammalian cell (HEK293) expression system
Purity	> 95% as determined by Tris-Bis PAGE; > 95% as determined by HPLC
Endotoxin Level	< 1 EU per 1 ug of protein (determined by LAL method)
Activity	The EC ₅₀ was 27.2 ng/mL, measured by ELISA at 0.5 ug/mL.
Quality Control Testing	SEC-HPLC and Tris-Bis PAGE SEC-HPLC The purity of Human-AREG is greater than 95% as determined by SEC-HPLC. Tris-Bis PAGE Human-AREG on Tris-Bis PAGE under reduced condition. The purity is greater than 95%.
Recommend Usage	Biological Activity ELISA SDS-PAGE The optimal working dilution should be determined by the end user.
Storage Buffer	Lyophilized from sterile distilled Water is > 100 ug/mL
Storage Instruction	Store at 2°C to 8°C for 1 week. For long term storage, aliquot and store at -20°C to -80°C. Aliquot to avoid repeated freezing and thawing.
Note	Result of bioactivity analysis

Applications

- Enzyme-linked Immunoabsorbent Assay

Immobilized Human AREG, hFc Tag at 0.5 ug/mL (100 uL/Well) on the plate. Dose response curve for Biotinylated Anti-AREG Antibody, hFc Tag with the EC₅₀ of 27.2 ng/mL determined by ELISA.

- Functional Study

- SDS-PAGE

Gene Info — AREG

Entrez GeneID	374
Protein Accession#	P15514
Gene Name	AREG
Gene Alias	AR, CRDGF, MGC13647, SDGF
Gene Description	amphiregulin
Omim ID	104640
Gene Ontology	Hyperlink
Gene Summary	<p>The protein encoded by this gene is a member of the epidermal growth factor family. It is an autocrine growth factor as well as a mitogen for astrocytes, Schwann cells, and fibroblasts. It is related to epidermal growth factor (EGF) and transforming growth factor alpha (TGF-alpha). This protein interacts with the EGF/TGF-alpha receptor to promote the growth of normal epithelial cells and inhibits the growth of certain aggressive carcinoma cell lines. This encoded protein is associated with a psoriasis-like skin phenotype. [provided by RefSeq]</p>
Other Designations	OTTHUMP00000160473 colorectum cell-derived growth factor schwannoma-derived growth factor

Pathway

- [ErbB signaling pathway](#)

Disease

- [Genetic Predisposition to Disease](#)
- [Ovarian Neoplasms](#)