

Bioactive

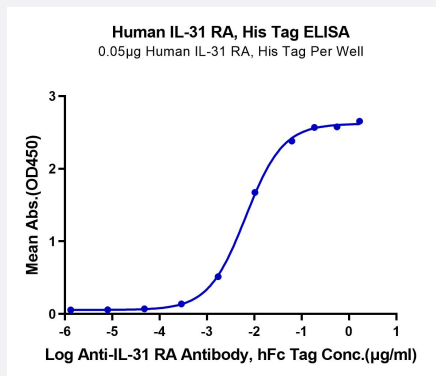
HuPro®

# IL31RA (Human) Recombinant Protein

Catalog # P9923

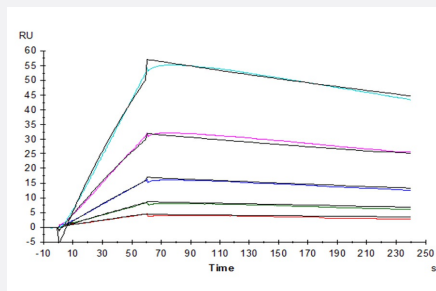
Size 100 ug

## Applications



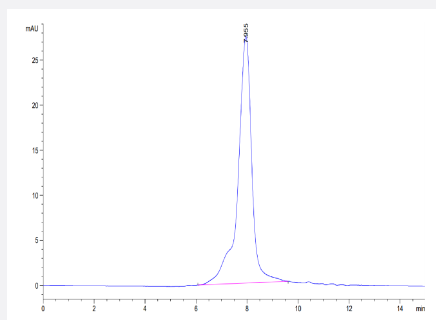
### Enzyme-linked Immunoabsorbent Assay

Immobilized Human IL-31 RA, His Tag at 0.5 ug/mL (100 uL/well) on the plate. Dose response curve for Anti-IL-31 RA Antibody, hFc Tag with the EC<sub>50</sub> of 6.5 ng/mL determined by ELISA (QC Test).



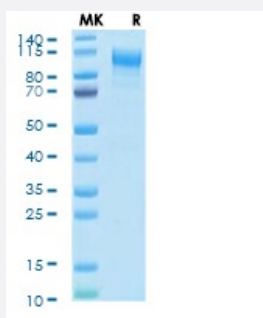
### Surface Plasmon Resonance

Human IL-31, His Tag immobilized on CM5 Chip can bind Human IL-31 RA, His Tag with an affinity constant of 82.4nM as determined in a SPR assay (Biacore T200).



### SEC-HPLC

The purity of Human IL-31 RA-is greater than 95% as determined by SEC-HPLC.



## Tris-Bis PAGE

Human IL-31 RA-on Tris-Bis PAGE under reduced condition. The purity is greater than 95%.

## Specification

<b>Product Description</b>	Human IL31RA (Q8NI17-1, Ala20-Glu519) partial recombinant protein with His tag at C-Terminus expressed in HEK293 cells.
<b>Sequence</b>	Ala20-Glu519
<b>Host</b>	Human
<b>Theoretical MW (kDa)</b>	58.2
<b>Form</b>	Lyophilized
<b>Preparation Method</b>	Mammalian cell (HEK293) expression system
<b>Purity</b>	> 95% as determined by Tris-Bis PAGE; > 95% as determined by HPLC
<b>Endotoxin Level</b>	< 1 EU per 1 ug of protein (determined by LAL method)
<b>Activity</b>	The EC <sub>50</sub> was 6.5 ng/mL, measured by ELISA at 0.5 ug/mL. The affinity constant of 82.4 nM as determined in SPR assay (Biacore T200).
<b>Quality Control Testing</b>	SEC-HPLC and Tris-Bis PAGE SEC-HPLC The purity of Human IL-31 RA-is greater than 95% as determined by SEC-HPLC. Tris-Bis PAGE Human IL-31 RA-on Tris-Bis PAGE under reduced condition. The purity is greater than 95%.
<b>Recommend Usage</b>	Biological Activity ELISA SDS-PAGE SPR The optimal working dilution should be determined by the end user.
<b>Storage Buffer</b>	Lyophilized from sterile distilled Water is > 100 ug/mL
<b>Storage Instruction</b>	Store at 2°C to 8°C for 1 week. For long term storage, aliquot and store at -20°C to -80°C. Aliquot to avoid repeated freezing and thawing.
<b>Note</b>	Result of bioactivity analysis

## Applications

- Enzyme-linked Immunoabsorbent Assay

Immobilized Human IL-31 RA, His Tag at 0.5 ug/mL (100 uL/well) on the plate. Dose response curve for Anti-IL-31 RA Antibody, hFc Tag with the EC50 of 6.5 ng/mL determined by ELISA (QC Test).

- Functional Study

- SDS-PAGE

- Surface Plasmon Resonance

Human IL-31, His Tag immobilized on CM5 Chip can bind Human IL-31 RA, His Tag with an affinity constant of 82.4nM as determined in a SPR assay (Biacore T200).

## Gene Info — IL31RA

Entrez GeneID	<a href="#">133396</a>
Protein Accession#	<a href="#">Q8NI17-1</a>
Gene Name	IL31RA
Gene Alias	CRL, CRL3, GLM-R, GLMR, GPL, IL-31RA, MGC125346, PRO21384
Gene Description	interleukin 31 receptor A
Omim ID	<a href="#">609510</a>
Gene Ontology	<a href="#">Hyperlink</a>
Gene Summary	IL31RA is related to gp130 (IL6ST; MIM 600694), the common receptor subunit for IL6 (MIM 147620)-type cytokines. Oncostatin M receptor (OSMR; MIM 601743) and IL31RA form the heterodimeric receptor through which IL31 (MIM 609509) signals. Expression of IL31RA and OSMR mRNA is induced in activated monocytes, and both mRNAs are constitutively expressed in epithelial cells (Dillon et al., 2004 [PubMed 15184896]).[supplied by OMIM]
Other Designations	GP130 like receptor[OTTHUMP00000122547]class I cytokine receptor[gp130-like monocyte receptor[soluble type I cytokine receptor CRL3

## Disease

- [Genetic Predisposition to Disease](#)

- [Thyroid Neoplasms](#)
- [Tobacco Use Disorder](#)