

Bioactive

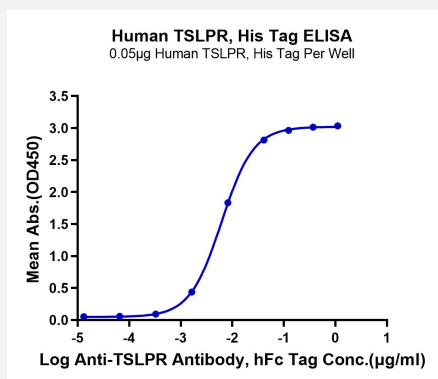
HuPro®

CRLF2 (Human) Recombinant Protein

Catalog # P9915

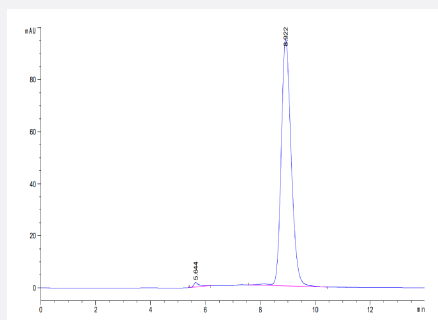
Size 100 ug

Applications



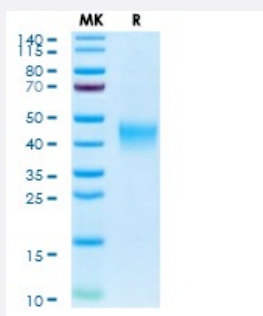
Enzyme-linked Immunoabsorbent Assay

Immobilized Human TSLPR, His Tag at 0.5 ug/mL (100 uL/Well) on the plate. Dose response curve for Anti-TSLPR Antibody, hFc Tag with the EC50 of 6.2 ng/mL determined by ELISA (QC Test).



SEC-HPLC

The purity of Human TSLPR is greater than 95% as determined by SEC-HPLC.



Tris-Bis PAGE

Human TSLPR on Tris-Bis PAGE under reduced condition. The purity is greater than 95%.

Specification

Product Description	Human CRLF2 (Q9HC73-1, Gly25-Lys231) partial recombinant protein with His tag at C-Terminus expressed in HEK293 cells.
Sequence	Gly25-Lys231
Host	Human
Theoretical MW (kDa)	25.1
Form	Lyophilized
Preparation Method	Mammalian cell (HEK293) expression system
Purity	> 95% as determined by Tris-Bis PAGE; > 95% as determined by HPLC
Endotoxin Level	< 1 EU per 1 ug of protein (determined by LAL method)
Activity	The EC ₅₀ was 6.2 ng/mL, measured by ELISA at 0.5 ug/mL.
Quality Control Testing	SEC-HPLC and Tris-Bis PAGE SEC-HPLC The purity of Human TSLPR is greater than 95% as determined by SEC-HPLC. Tris-Bis PAGE Human TSLPR on Tris-Bis PAGE under reduced condition. The purity is greater than 95%.
Recommend Usage	Biological Activity ELISA SDS-PAGE The optimal working dilution should be determined by the end user.
Storage Buffer	Lyophilized from sterile distilled Water is > 100 ug/mL
Storage Instruction	Store at 2°C to 8°C for 1 week. For long term storage, aliquot and store at -20°C to -80°C. Aliquot to avoid repeated freezing and thawing.
Note	Result of bioactivity analysis

Applications

- Enzyme-linked Immunoabsorbent Assay

Immobilized Human TSLPR, His Tag at 0.5 ug/mL (100 uL/Well) on the plate. Dose response curve for Anti-TSLPR Antibody, hFc Tag with the EC₅₀ of 6.2 ng/mL determined by ELISA (QC Test).

- Functional Study

- SDS-PAGE

Gene Info — CRLF2

Entrez GeneID [64109](#)

Protein Accession# [Q9HC73-1](#)

Gene Name CRLF2

Gene Alias CRL2, CRLF2Y, TSLPR

Gene Description cytokine receptor-like factor 2

Omim ID [300357 400023](#)

Gene Ontology [Hyperlink](#)

Gene Summary Cytokine signals are mediated through specific receptor complexes, the components of which are mostly members of the type I cytokine receptor family. Type I cytokine receptors share conserved structural features in their extracellular domain. Receptor complexes are typically heterodimeric, consisting of alpha chains, which provide ligand specificity, and beta (or gamma) chains, which are required for the formation of high-affinity binding sites and signal transduction.[supplied by OMIM]

Other Designations cytokine receptor CRL2 precursor|thymic stromal lymphopoietin receptor|thymic stromal-derived lymphopoietin receptor

Pathway

- [Cytokine-cytokine receptor interaction](#)
- [Jak-STAT signaling pathway](#)

Disease

- [Asthma](#)
- [Dermatitis](#)
- [Kaposi Varicelliform Eruption](#)