

Bioactive

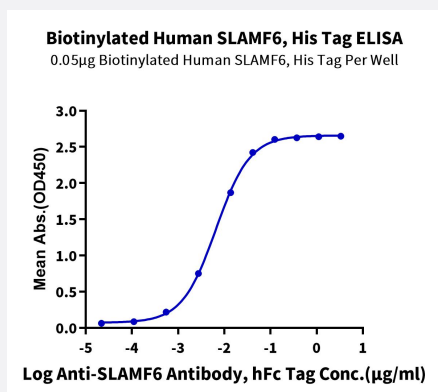
HuPro®

SLAMF6 (Human) Recombinant Protein

Catalog # P9906

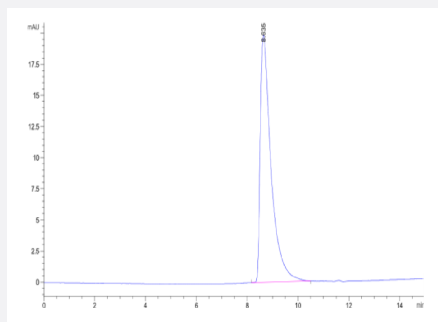
Size 100 ug

Applications



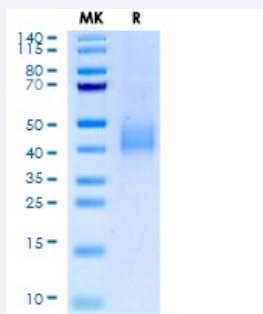
Enzyme-linked Immunoabsorbent Assay

Immobilized Biotinylated Human SLAMF6, His Tag at 0.5 ug/mL (100 uL/Well) on streptavidin (5 ug/mL) precoated plate. Dose response curve for Anti-SLAMF6 Antibody, hFc Tag with the EC50 of 6.6 ng/mL determined by ELISA.



SEC-HPLC

The purity of Biotinylated Human SLAMF6 is greater than 95% as determined by SEC-HPLC.



Tris-Bis PAGE

Biotinylated Human SLAMF6 on Tris-Bis PAGE under reduced condition. The purity is greater than 95%.

Specification

Product Description	Human SLAMF6 (Q96DU3-1, Gln22-Met226) partial recombinant protein with His-Avi tag at C-Terminus expressed in HEK293 cells.
Sequence	Gln22-Met226
Host	Human
Theoretical MW (kDa)	26
Form	Lyophilized
Preparation Method	Mammalian cell (HEK293) expression system
Purity	> 95% as determined by Tris-Bis PAGE; > 95% as determined by HPLC
Endotoxin Level	< 1 EU per 1 ug of protein (determined by LAL method)
Activity	The EC ₅₀ was 6.6 ng/mL, measured by ELISA at 0.5 ug/mL.
Quality Control Testing	SEC-HPLC and Tris-Bis PAGE SEC-HPLC The purity of Biotinylated Human SLAMF6 is greater than 95% as determined by SEC-HPLC. Tris-Bis PAGE Biotinylated Human SLAMF6 on Tris-Bis PAGE under reduced condition. The purity is greater than 95%.
Recommend Usage	Biological Activity ELISA SDS-PAGE The optimal working dilution should be determined by the end user.
Storage Buffer	Lyophilized from sterile distilled Water is > 100 ug/mL
Storage Instruction	Store at 2°C to 8°C for 1 week. For long term storage, aliquot and store at -20°C to -80°C. Aliquot to avoid repeated freezing and thawing.
Note	Result of bioactivity analysis

Applications

- Enzyme-linked Immunoabsorbent Assay

Immobilized Biotinylated Human SLAMF6, His Tag at 0.5 ug/mL (100 uL/Well) on streptavidin (5 ug/mL) precoated plate. Dose response curve for Anti-SLAMF6 Antibody, hFc Tag with the EC₅₀ of 6.6 ng/mL determined by ELISA.

- Functional Study

- SDS-PAGE

Gene Info — SLAMF6

Entrez GeneID [114836](#)**Protein Accession#** [Q96DU3-1](#)**Gene Name** SLAMF6**Gene Alias** KALI, KAL1b, Ly108, MGC104953, NTB-A, NTBA, SF2000**Gene Description** SLAM family member 6**Omim ID** [606446](#)**Gene Ontology** [Hyperlink](#)

Gene Summary The protein encoded by this gene is a type I transmembrane protein, belonging to the CD2 subfamily of the immunoglobulin superfamily. This encoded protein is expressed on Natural killer (NK), T, and B lymphocytes. It undergoes tyrosine phosphorylation and associates with the Src homology 2 domain-containing protein (SH2D1A) as well as with SH2 domain-containing phosphatases (SHPs). It may function as a coreceptor in the process of NK cell activation. It can also mediate inhibitory signals in NK cells from X-linked lymphoproliferative patients. [provided by RefSeq]

Other Designations NTBA receptor|OTTHUMP00000024348|activating NK receptor|natural killer-, T- and B-cell antigen

Disease

- [Cardiovascular Diseases](#)
- [Diabetes Mellitus](#)
- [Edema](#)
- [Tobacco Use Disorder](#)