

Bioactive

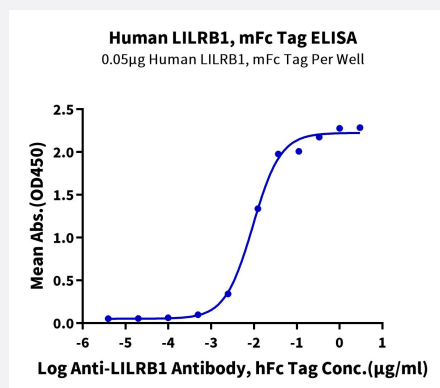
HuPro®

LILRB1 (Human) Recombinant Protein

Catalog # P9904

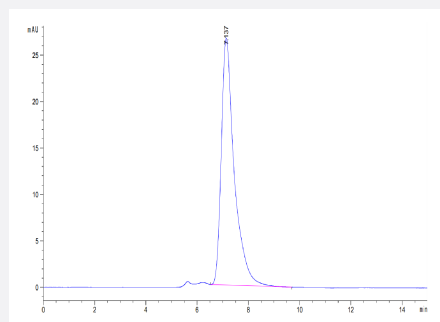
Size 100 ug

Applications



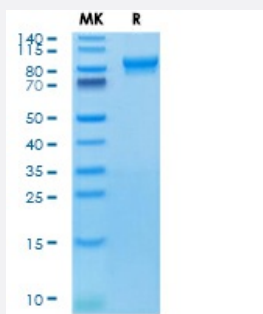
Enzyme-linked Immunoabsorbent Assay

Immobilized Human LILRB1, mFc Tag at 0.5 ug/mL (100 uL/well) on the plate. Dose response curve for Anti-LILRB1 Antibody, hFc Tag with the EC50 of 9.4 ng/mL determined by ELISA.



SEC-HPLC

The purity of-Human LILRB1 is greater than 95% as determined by SEC-HPLC.



Tris-Bis PAGE

Human LILRB1 on Tris-Bis PAGE under reduced conditions. The purity is greater than 95%.

Specification

Product Description	Human LILRB1 (Q8NHL6-1, Gly24-His458) partial recombinant protein with mFc tag at C-Terminus expressed in HEK293 cells.
Sequence	Gly24-His458
Host	Human
Theoretical MW (kDa)	73.5
Form	Lyophilized
Preparation Method	Mammalian cell (HEK293) expression system
Purity	> 95% as determined by Tris-Bis PAGE; > 95% as determined by HPLC
Endotoxin Level	< 1 EU per 1 ug of protein (determined by LAL method)
Activity	The EC ₅₀ was 9.4 ng/mL, measured by ELISA at 0.5 ug/mL.
Quality Control Testing	SEC-HPLC and Tris-Bis PAGE SEC-HPLC The purity of-Human LILRB1 is greater than 95% as determined by SEC-HPLC. Tris-Bis PAGE Human LILRB1 on Tris-Bis PAGE under reduced conditions. The purity is greater than 95%.
Recommend Usage	Biological Activity ELISA SDS-PAGE The optimal working dilution should be determined by the end user.
Storage Buffer	Lyophilized from sterile distilled Water is > 100 ug/mL
Storage Instruction	Store at 2°C to 8°C for 1 week. For long term storage, aliquot and store at -20°C to -80°C. Aliquot to avoid repeated freezing and thawing.
Note	Result of bioactivity analysis

Applications

- Enzyme-linked Immunoabsorbent Assay

Immobilized Human LILRB1, mFc Tag at 0.5 ug/mL (100 uL/well) on the plate. Dose response curve for Anti-LILRB1 Antibody, hFc Tag with the EC₅₀ of 9.4 ng/mL determined by ELISA.

- Functional Study

- SDS-PAGE

Gene Info — LILRB1

Entrez GeneID	10859
Protein Accession#	Q8NHL6-1
Gene Name	LILRB1
Gene Alias	CD85, CD85J, FLJ37515, ILT2, LIR-1, LIR1, MIR-7, MIR7
Gene Description	leukocyte immunoglobulin-like receptor, subfamily B (with TM and ITIM domains), member 1
Omim ID	604811
Gene Ontology	Hyperlink
Gene Summary	<p>This gene is a member of the leukocyte immunoglobulin-like receptor (LIR) family, which is found in a gene cluster at chromosomal region 19q13.4. The encoded protein belongs to the subfamily B class of LIR receptors which contain two or four extracellular immunoglobulin domains, a transmembrane domain, and two to four cytoplasmic immunoreceptor tyrosine-based inhibitory motifs (ITIMs). The receptor is expressed on immune cells where it binds to MHC class I molecules on antigen-presenting cells and transduces a negative signal that inhibits stimulation of an immune response. It is thought to control inflammatory responses and cytotoxicity to help focus the immune response and limit autoreactivity. Multiple transcript variants encoding different isoforms have been found for this gene. [provided by RefSeq]</p>
Other Designations	CD85 antigen Ig-like transcript 2 OTTHUMP00000068384 OTTHUMP00000068385 OTTHUMP00000068386 OTTHUMP00000068408 immunoglobulin-like transcript 2 leukocyte Ig-like receptor-1 leukocyte immunoglobulin-like receptor 1 leukocyte immunoglobulin-like receptor sub

Disease

- [Arthritis](#)
- [Cardiovascular Diseases](#)
- [Diabetes Mellitus](#)
- [Edema](#)
- [Genetic Predisposition to Disease](#)